



- ..... Safety Instructions
- ..... Introduction
- ..... Setup
- ..... Adjusting Your Monitor
- ..... Troubleshooting
- ..... Specifications
- ..... Information



**Install drivers**

**Install programs**

▶▶ Windows Me Windows 98 ▶▶ Natural Color

▶▶ Windows 2000 Windows XP ▶▶ MagicTune™

▶▶ MagicRotation Windows 98

▶▶ MagicRotation Windows 2000  
 Windows XP

# SyncMaster 204T



● **Notational**

Please read the following safety instructions as they are designed to prevent damage to property and harm to the user.

 **Warning / Caution**



Failure to follow directions noted by this symbol could result in bodily harm or damage to equipment.

 **Notational Conventions**



Prohibited



Important to read and understand at all times



Do not disassemble



Disconnect the plug from the outlet



Do not touch



Grounding to prevent an electric shock

● **Power**



When not used for extended period of time, set your computer to DPMS. If using a screen saver, set it to the active screen mode.

[Shortcut to Anti-Afterimage Instructions](#) 



- ❑ **Do not use a damaged or loose plug.**
  - This may cause an electric shock or fire.



- ❑ **Do not pull the plug out by the wire nor touch the plug with wet hands.**
  - This may cause an electric shock or fire.



- ❑ **Use only a properly grounded plug and receptacle.**
  - An improper ground may cause electric shock or equipment damage.



- ❑ **Insert the power plug firmly so that it does not come loose.**
  - A bad connection may cause fire.



- ❑ **Do not excessively bend the plug and wire nor place heavy objects upon them, which could cause damage.**
  - This may cause an electric shock or fire.



- ❑ **Do not connect too many extension cords or plugs to an outlet.**
  - This may cause fire.

---

Notational

Power

**Installation**

Clean

Others

## ● Installation



Be sure to contact an authorized [Service Center](#) when installing your set in a location with heavy dust, high or low temperatures, high humidity, and chemical substances, or where it will be operated for 24 hours continuously such as an airport, train station or etc.

Failure to do so may cause serious damage to your set.

---



- **Put your monitor in a location with low humidity and a minimum of dust.**
  - Failure to do so may cause an electric shock or fire inside the monitor.



- **Do not drop the monitor when moving it.**
  - This may cause damage to the product or human body.



- **Install the monitor base in a showcase or shelf so that the end of the base does not project beyond the showcase or shelf.**
  - Dropping the product may cause damage to the product or personal injury.



- **Do not place the product on an unstable or small surface area.**
  - Place the product on an even, stable surface, as the product may fall and cause harm to someone walking by, specifically children.



- **Do not place the product on the floor.**
  - Someone, specifically children could trip over it.



- **Keep any flammable objects such as candles, insecticides or cigarettes away from the product.**
  - Otherwise, this may cause a fire.



- **Keep any heating devices away from the power cable.**
  - A melted coating may lead to electric shock or fire.



- **Do not install the product in places with poor ventilation, for instance, a bookshelf, closet, etc.**
  - Any increase in internal temperature may cause fire.



- **Set down the monitor carefully.**
  - The monitor could be damaged or broken.



• **Do not place the monitor face down.**

- The TFT-LCD surface may be damaged.



• **Installing a wall bracket must be done by a qualified professional.**

- Installation by unqualified personnel may result in injury.
- Always use the mounting device specified in the owner's manual.



• **When installing the product, make sure to keep it away from the wall (more than 10cm/4inch ) for ventilation purposes.**

- Poor ventilation may cause an increase in the internal temperature of the product, resulting in a shortened component life and degraded performance.

Notational

Power

Installation

Clean

Others

• Clean



When cleaning the monitor case or the surface of the TFT-LCD screen, wipe with a slightly moistened, soft fabric.



• **Do not spray water or detergent directly on the monitor.**

- This may cause damage, electric shock or fire.



• **Use the recommended detergent with a smooth cloth.**



• **If the connector between the plug and the pin is dusty or dirty, clean it properly with a dry cloth.**

- A dirty connector may cause an electric shock or fire.



• **Make sure to unplug the power cord before cleaning the product.**

- Otherwise, this may cause electric shock or fire.



- **Unplug the power cord from the power outlet and wipe the product using a soft, dry cloth.**

- Do not use any chemicals such as wax, benzene, alcohol, thinners, insecticide, air freshener, lubricant or detergent.



- **Contact the [Service Center](#) or [Customer Center](#) for interior cleaning once a year.**

- Keep the product's interior clean. Dust which has accumulated in the interior over an extended period of time may cause malfunction or fire.

[Notational](#)

[Power](#)

[Installation](#)

[Clean](#)

[Others](#)

#### Others



- **Do not remove cover (or back).**

- This may cause an electric shock or fire.
- Refer servicing to qualified service personnel.



- **If your monitor does not operate normally - in particular, if there are any unusual sounds or smells coming from it - unplug it immediately and contact an [authorized dealer or service](#).**

- This may cause an electric shock or fire.



- **Keep the product away from places exposed to oil, smoke or moisture; do not install inside a vehicle.**

- This may cause malfunction, an electric shock or fire.
- Especially avoid operating the monitor near water or outdoors where the monitor could be exposed to snow or rain.



- **If the monitor is dropped or the casing is damaged, turn the monitor off and unplug the power cord. Then contact the [Service Center](#).**

- The monitor may malfunction, causing an electric shock or fire.



- **Disconnect the plug from the outlet during storms or lightening or if it is not used for a long period of time.**

- Failure to do so may cause an electric shock or fire.



**Do not try to move the monitor by pulling only the wire or the signal cable.**

- This may cause a breakdown, electric shock or fire due to damage to the cable.



**Do not move the monitor right or left by pulling only the wire or the signal cable.**

- This may cause a breakdown, electric shock or fire due to damage to the cable.



**Do not cover the vents on the monitor cabinet.**

- Bad ventilation may cause a breakdown or fire.



**Do not place water containers, chemical products or small metal objects on the monitor.**

- This may cause malfunction, an electric shock or fire.
- If a foreign substance enters the monitor, unplug the power cord and contact the [Service Center](#) .



**Keep the product away from combustible chemical sprays or inflammable substances.**

- This may cause an explosion or fire.



**Never insert anything metallic into the monitor openings.**

- This may cause an electric shock, fire or injury.



**Do not insert metal objects such as chopsticks, wire and gimlet or inflammable objects such as paper and match into the vent, headphone port or AV ports.**

- It may cause a fire or an electric shock. If an alien substances or water flows into the product, turn the product off, unplug the power connector from the wall outlet and contact [Service Center](#).



**If you view a fixed screen for an extended period of time, residual image or blurriness may appear.**

- Change the mode to energy save or set a screensaver to moving picture when you need to be away from the monitor for an extended period of time.



• **Adjust the resolution and frequency to the levels appropriate for the model.**

- Inappropriate resolution may cause undesirable picture quality.

20 inch - 1600 X 1200



• **Watching the monitor continuously at a too close angle may result in eyesight damage.**



• **To ease eye strain, take at least a five-minute break after every hour of using the monitor.**



• **Do not install the product on an unstable, uneven surface or a location prone to vibrations.**

- Dropping the product may cause damage to the product or personal injury. Using the product in a location prone to vibrations may shorten the lifetime of the product or may catch fire.



• **When moving the monitor, turn off and unplug the power cord. Make sure that all cables, including the antenna cable and cables connected to other devices, are disconnected before moving the monitor.**

- Failure to disconnect a cable may damage it and lead to fire or an electric shock.



• **Place the product out of children's reach, as they could damage it by hanging onto it.**

- A falling product could cause physical damage even death.



• **When not using the product for an extended time period, keep the product unplugged**

- Otherwise, this may cause heat emission from the accumulated dirt or degraded insulation, leading to electric shock or fire.



• **Do not place children's favorite objects (or anything else that may be tempting) on the product.**

- Children may try to climb on the product to retrieve an object. The product could fall, causing physical damage or even death.





Unpacking

Front

Rear

Please make sure the following items are included with your monitor.  
If any items are missing, [contact your dealer](#).  
[Contact a local dealer](#) to buy optional items.

Unpacking



Monitor

Manual



Quick Setup Guide



Warranty Card  
(Not available in all locations)



User's Guide, Monitor Driver,  
Natural Color, MagicTune™,  
MagicRotation software

Cable

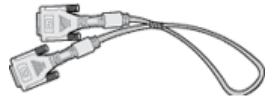




D-Sub Cable

Power Cord

Sold separately



DVI Cable



Set-Bracket



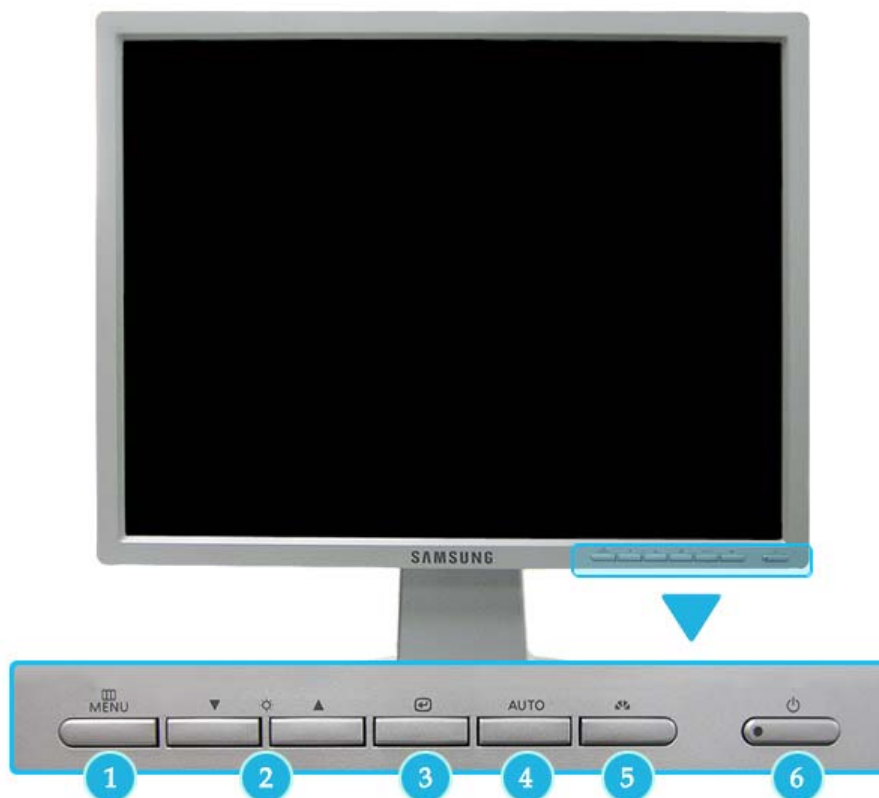
Screws (4EA)

Unpacking

Front

Rear

Front



1 Menu button [MENU]

Opens the OSD menu. Also use to exit the OSD menu or return to the previous menu.

2 Brightness button [▼/▲][☉]

Adjust items in the menu. / When OSD is not on the screen, push the button to adjust brightness.

>>Click here to see an animation clip

3 Enter button [OK] / Source button

Activates a highlighted menu item. / Push the 'OK', then selects the video signal while the OSD is off. (When the source button is pressed to change the input mode, a message appears in the upper left of the screen displaying the current mode -- analog or digital input signal.)

Note : If you select the digital mode, you must connect your monitor

to the graphic card's DVI port using the DVI cable.

#### 4 Auto button

When the 'AUTO' button is pressed, the Auto Adjustment screen appears as shown in the animated screen on the center. Auto adjustment allows the monitor to self-adjust to the incoming video signal. The values of fine, coarse and position are adjusted automatically. (Available in analog mode only)

>>[Click here to see an animation clip](#)

#### 5 MagicBright button [▲▼]

MagicBright is a new feature providing optimum viewing environment depending on the contents of the image you are watching. Currently six different modes are available: Custom, Text, Internet, Game, Sport and Movie. Each mode has its own pre-configured brightness value. You can easily select one of six settings by simply pressing MagicBright control buttons.

##### 1) Custom

Although the values are carefully chosen by our engineers, the pre-configured values may not be comfortable to your eyes depending on your taste.

If this is the case, adjust the brightness and contrast by using the OSD menu.

##### 2) Text : Normal brightness

For documentations or works involving heavy text.

##### 3) Internet : Medium brightness

For working with a mixture of images such as text and graphics.

##### 4) Game

For watching motion pictures such as a game.

##### 5) Sport

For watching motion pictures such as a sport.

##### 6) Movie : High brightness

For watching motion pictures such as a DVD or Video CD.

>>[Click here to see an animation clip](#)

#### 6 Power button

Use this button for turn the monitor on and off.  
(Power On : Green color)



See [PowerSaver](#) described in the manual for further information regarding power saving functions. For energy conservation, turn your monitor OFF when it is not needed, or when leaving it unattended for long periods.

Unpacking

Front

Rear

6 Rear

(The configuration at the back of the monitor may vary from product to product.)

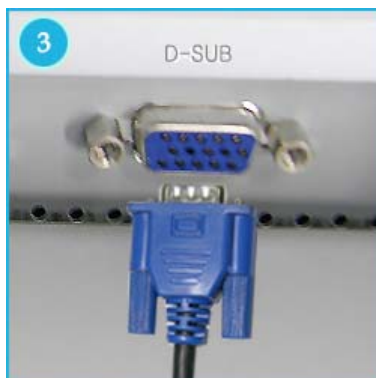


**POWER S/W** : Switch the monitor on and off.

**POWER IN** : Power cord, plugs into monitor and wall receptacle.



**DVI port** : Connect the DVI cable to the DVI port on the back of your monitor. (SOURCE : digital)



**D-sub 15-pin port** : Connect the signal cable to the 15-pin, D-sub connector on the back of your monitor. (SOURCE : analog)

**Kensington Lock** : The Kensington lock is a device used to physically fix the system when using it in a public place.



(The locking device has to be purchased separately. )



#### **Stand Height Adjustment**

- Press the top side of the stand and then push the button at the rear bottom of the stand.
- You can adjust the stand height using this button.



When you are using a stand height as maximum ,  
it will go down a little bit from spring elasticity.



See [Connecting the Monitor](#) for further information regarding cable connections.



Connecting the Monitor

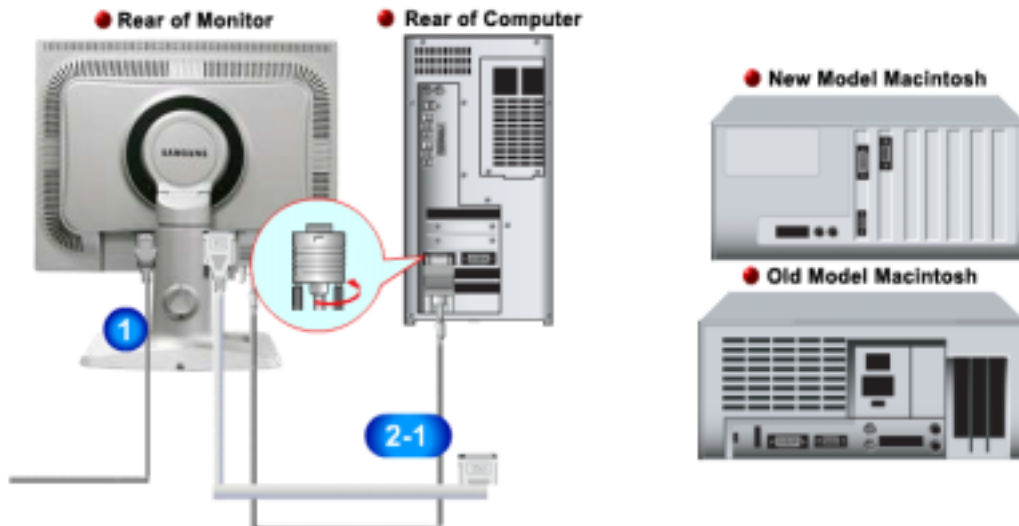
Using the Stand



Installing the Monitor Driver  
(Automatic)

Installing the Monitor Driver  
(Manual)

Natural Color

### Connecting the Monitor



1. Connect the power cord for your monitor to the power port on the back of the monitor. Plug the power cord for the monitor into a nearby outlet.
- 2-1. Using the D-sub (Analog) connector on the video card. Connect the signal cable to the 15-pin, D-sub connector on the back of your monitor.
 
- 2-2. Using the DVI (Digital) connector on the video card. Connect the DVI cable to the DVI port on the back of your monitor.
 
- 2-3. Connected to a Macintosh. Connect the monitor to the Macintosh computer using the D-SUB connection cable.
- 2-4. In the case of an old model Macintosh, you need to connect the monitor using a special Mac adapter.
3. Turn on your computer and monitor. If your monitor displays an image, installation is complete.

## Using the Stand

### Removing the base



1. Turn off your monitor and unplug its power cord.
2. Lay the LCD monitor face-down on a flat surface with a cushion beneath it to protect the screen.
3. Remove four screws(A) and then remove the Stand from the LCD monitor.

### Attaching a Base

This monitor accepts a 100mm x 100mm VESA-compliant mounting interface pad.



**A.** Monitor

**B.** Mounting interface pad

1. Turn off your monitor and unplug its power cord.
2. Lay the LCD monitor face-down on a flat surface with a cushion beneath it to protect the screen.
3. Remove four screws and then remove the stand from the LCD monitor.
4. Align the mounting interface Pad with the holes in the rear cover mounting pad and secure it with four screws that came with the arm-type base, wall mount hanger or other base.

## Installing the Monitor Driver (Automatic)



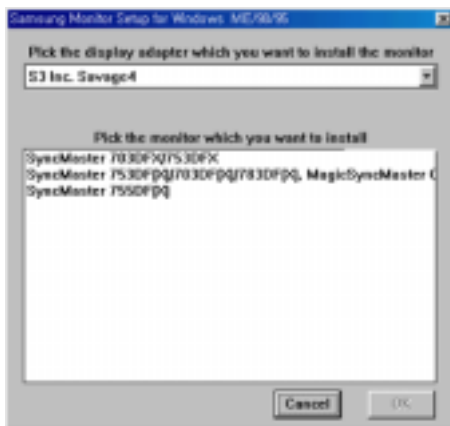
When prompted by the operating system for the monitor driver, insert the CD-ROM included with this monitor. Driver installation is slightly different from one operating system to another. Follow the directions appropriate for the operating system you have.

Prepare a blank disk and download the driver program file at the Internet web site shown here.

- Internet web site : <http://www.samsung.com/> (Worldwide)  
<http://www.samsung.com/monitor> (U.S.A)  
<http://www.sec.co.kr/monitor> (Korea)  
<http://www.samsungmonitor.com.cn/> (China)

### Windows ME

1. Insert CD into the CD-ROM drive.
2. Click "**Windows ME Driver**".
3. Choose your monitor model in the model list, then click the "**OK**" button.



4. Click the "**Install**" button in the "**Warning**" window.



5. Monitor driver installation is completed.

### Windows XP/2000

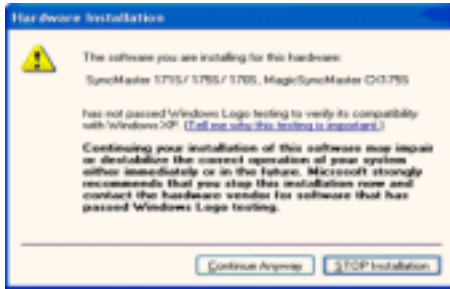
1. Insert CD into the CD-ROM drive.
2. Click "**Windows XP/2000 Driver**".
3. Choose your monitor model in the model list, then click the "**OK**" button.



4. If you can see following message window, then click the "**Continue Anyway**" button.



Then click "OK" button.



This monitor driver is under certifying MS logo, and this installation don't damage your system. The certified driver will be posted on Samsung Monitor Homepage <http://www.samsung.com/>.

5. Monitor driver installation is completed.

Connecting the Monitor | Using the Stand | Installing the Monitor Driver (Automatic) | **Installing the Monitor Driver (Manual)** | Natural Color

## Installing the Monitor Driver (Manual)

Windows XP | Windows 2000 | Windows Me | Windows NT | Linux



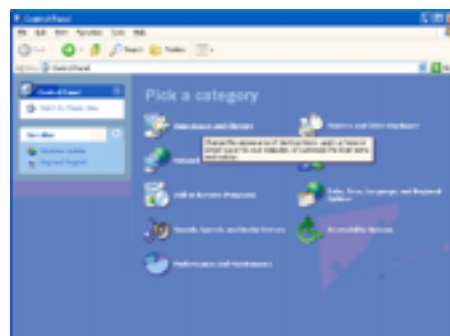
**When prompted by the operating system for the monitor driver, insert the CD-ROM included with this monitor. Driver installation is slightly different from one operating system to another. Follow the directions appropriate for the operating system you have.**

Prepare a blank disk and download the driver program file at the Internet web site shown here.

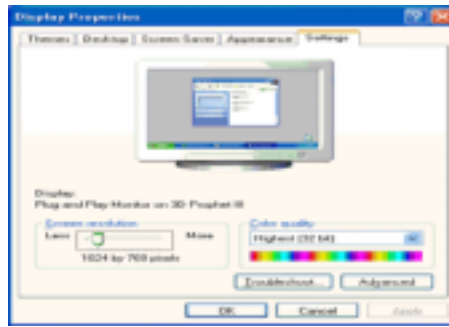
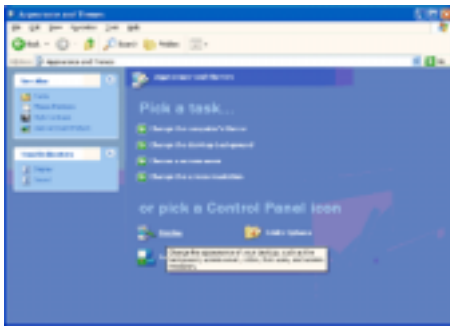
- Internet web site : <http://www.samsung.com/> (Worldwide)  
<http://www.samsung.com/monitor> (U.S.A)  
<http://www.sec.co.kr/monitor> (Korea)  
<http://www.samsungmonitor.com.cn/> (China)

### Microsoft® Windows® XP Operating System

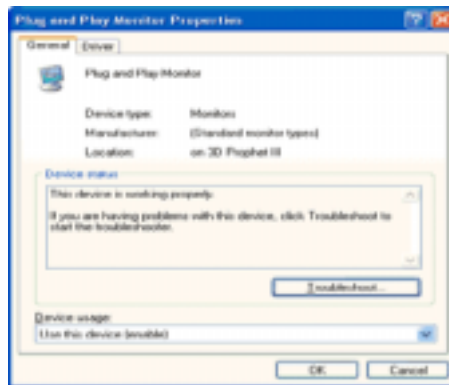
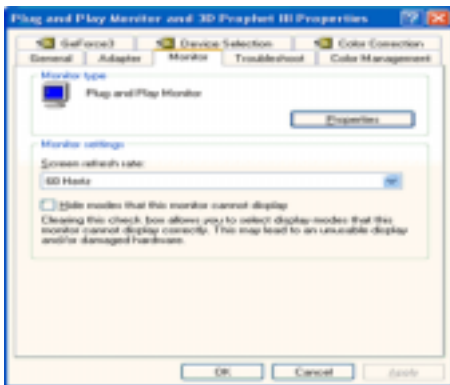
1. Insert CD into the CD-ROM driver.
2. Click "Start" —> "Control Panel" then click the "Appearance and Themes" icon.



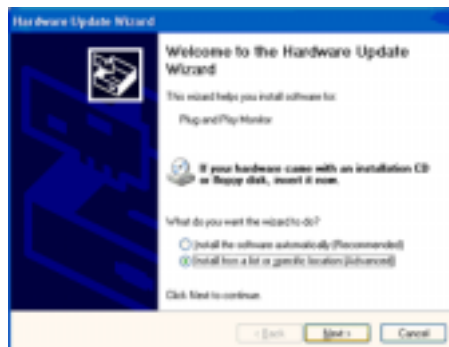
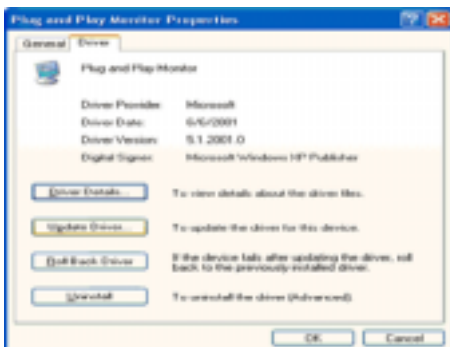
3. Click "Display" icon and choose the "Settings" tab then click "Advanced..".



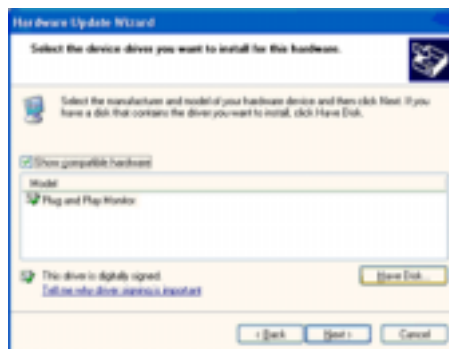
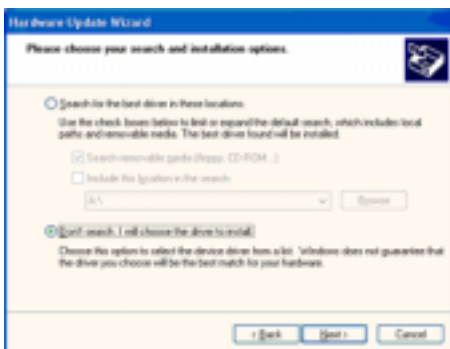
4. Click the **"Properties"** button on the **"Monitor"** tab and select **"Driver"** tab.



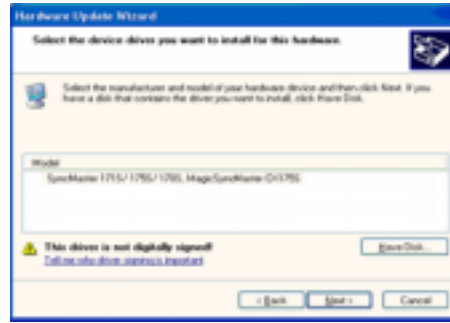
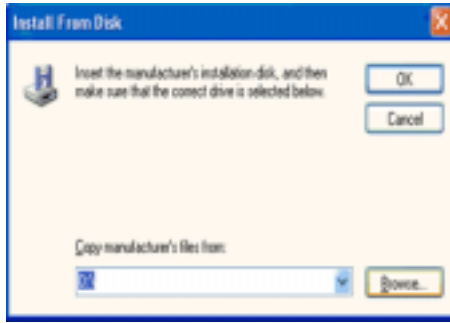
5. Click **"Update Driver.."** and select **"Install from a list or.."** then click **"Next"** button.



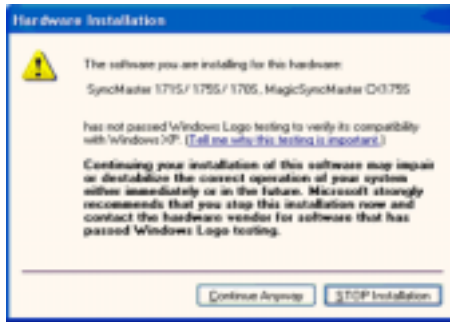
6. Select **"Don't search ,I will.."** then click **"Next"** and then click **"Have disk"**.



7. Click the **"Browse"** button then choose A:(D:\Driver) and choose your monitor model in the model list and click the **"Next"** button.

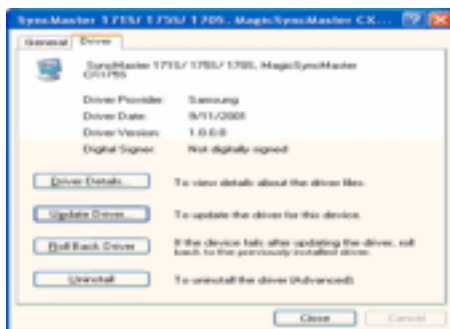
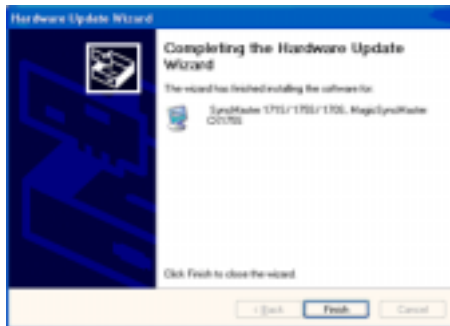


8. If you can see following **Message** window, then click the **"Continue Anyway"** button. Then click **"OK"** button.



This monitor driver is under certified MS logo, and this installation doesn't damage your system. The certified driver will be posted on Samsung Monitor homepage.  
<http://www.samsung.com/>

9. Click the **"Close"** button then click **"OK"** button continually.



10. Monitor driver installation is completed.

## Microsoft® Windows® 2000 Operating System

When you can see **"Digital Signature Not Found"** on your monitor, follow these steps.

1. Choose **"OK"** button on the **"Insert disk"** window.
2. Click the **"Browse"** button on the **"File Needed"** window.
3. Choose A:(D:\Driver) then click the **"Open"** button and then click **"OK"** button.


## How to install

1. Click **"Start"**, **"Setting"**, **"Control Panel"**.
  2. Double click the **"Display"** icon.
  3. Choose the **"Settings"** tab and then click **"Advanced.."**.
  4. Choose **"Monitor"**.
    - Case1: If the "Properties" button is inactive, it means your monitor is properly configured. Please stop installation
    - Case2: If the "Properties" button is active, click the "Properties" button then follow next steps continually.
  5. Click **"Driver"** and then click on **"Update Driver.."** then click on the "Next" button.
  6. Choose **"Display a list of the known drivers for this device so that I can choose a specific driver"** then click **"Next"** and then click **"Have disk"**.
  7. Click the **"Browse"** button then choose A:(D:\Driver).
  8. Click the **"Open"** button, then click **"OK"** button.
  9. Choose your monitor model and click the **"Next"** button then click **"Next"** button.
  10. Click the **"Finish"** button then the **"Close"** button.
- If you can see the **"Digital Signature Not Found"** window then click the **"Yes"** button. And click the **"Finish"** button then the **"Close"** button.

#### ● Microsoft® Windows® Millennium Operating System

1. Click **"Start"**, **"Setting"**, **"Control Panel"**.
2. Double click **"Display"** icon.
3. Select the **"Settings"** tab and click **"Advanced Properties"** button.
4. Select the **"Monitor"** tab.
5. Click the **"Change"** button in the **"Monitor Type"** area.
6. Choose **"Specify the location of the driver"**.
7. Choose **"Display a list of all the driver in a specific location.."** then click **"Next"** button.
8. Click the **"Have Disk"** button
9. Specify A:(D:\driver) then click **"OK"** button.
10. Select **"Show all devices"** and choose the monitor that corresponds to the one you connected to your computer and click **"OK"**.
11. Continue choosing **"Close"** button and **"OK"** button until you close the Display Properties dialogue box.

#### ● Microsoft® Windows® NT Operating System

1. Click **Start, Settings, Control Panel**, and then double-click **Display** icon.
  2. In Display Registration Information window, click Settings Tab and then click **All Display Modes**.
  3. Select a mode that you wish to use (Resolution, Number of colors and Vertical frequency) and then click **OK**.
  4. Click **Apply** button if you see the screen working normally after clicking **Test**. If the screen is not normal, change to a different mode (lower mode of resolution, colors or frequency).
-  If there is no Mode at **All Display Modes**, select the level of resolution and vertical frequency by referring to the [Preset Timing Modes](#) in the user guide.

#### ● Linux Operating System

To execute X-Window, you need to make the X86Config file, which is a type of system setting file.

1. Press Enter at the first and the second screen after executing the X86Config file.
2. The third screen is for **setting your mouse**.
3. Set a mouse for your computer.
4. The next screen is for **selecting a keyboard**.
5. Set a keyboard for your computer.
6. The next screen is for **setting your monitor**.
7. First of all, set a **horizontal frequency** for your monitor. (You can enter the frequency directly.)
8. Set a **vertical frequency** for your monitor. (You can enter the frequency directly.)
9. Enter the **model name of your monitor**. This information will not affect the actual execution of X-Window.
10. You have **finished** setting up your monitor.  
**Execute** X-Window after setting other requested hardware.

## Natural Color

### • Natural Color Software Program



One of the recent problems in using a computer is that the color of the images printed out by a printer or other images scanned by a scanner or a digital camera are not the same as those shown on the monitor.

The Natural Color S/W is the very solution for this problem. It is a color administration system developed by Samsung Electronics in association with Korea Electronics & Telecommunications Research Institute (ETRI).

This system is available only for Samsung monitors and makes the color of the images on the monitor the same as the printed or scanned images.

For more information, refer to Help (F1) in the software program.

#### **How to install the Natural Color software**

Insert the CD included with the Samsung monitor into the CD-ROM Drive. Then, the initial screen of the program Natural Color will be executed. Click Natural Color on the initial screen to install the Natural Color software.

To install the program manually, insert the CD included with the Samsung monitor into the CD-ROM Drive, click the [Start] button of Windows and then select [Execute].

Enter D:\color\eng\setup.exe and then press the <Enter> key.

(If the drive where the CD is inserted is not D:\, enter the applicable drive.)

#### **How to delete the Natural Color software program**

Select "**Setting/Control Panel**" on the "**Start**" menu and then double-click "**Add/Delete a program**".

Select Natural Color from the list and then click the "**Add/Delete**" button.



1. Use this button for open the on-screen menu and exits from the menu screen or closes screen adjustment menu.
2. These buttons allow you to adjust items in the menu.
3. Press this button to activates a highlighted menu item.
4. Press to self-adjust to the incoming PC signal. The values of fine,coarse and position are adjusted automatically.
5. MagicBright is a new feature providing optimum viewing environment depending on the contents of the image you are watching. Currently six different modes are available: Custom, Text, Internet, Game, Sport and Movie. Each mode has its own pre-configured brightness value. You can easily select one of six settings by simply pressing MagicBright control buttons.



Menu	Description
<p><b>AUTO</b></p>	<p>When the '<b>AUTO</b>' button is pressed, the Auto Adjustment screen appears as shown in the animated screen on the center.            Auto adjustment allows the monitor to self-adjust to the incoming video signal. The values of fine, coarse and position are adjusted automatically. (Available in analog mode only)</p> <p>To make the automatic adjustment function sharper, execute the 'AUTO' function while the <a href="#">AUTO PATTERN</a> is on.</p> <ul style="list-style-type: none"> <li>- If auto adjustment does not work properly, press AUTO button again to adjust picture with more accuracy.</li> <li>- If you change resolution in the control panel, auto function will be executed automatically.</li> </ul>


OSD Lock & Unlock



Menu	Description
<b>OSD Lock &amp; Unlock</b>	After pushing the "MENU" button more than 5 seconds, OSD function is locked (unlocked).

**MagicBright™**




Menu	Description
 <b>MagicBright™</b>	Push the MagicBright button to circle through available preconfigured modes. - Six different modes (Custom/Text/Internet/Game/Sport/Movie)

**Brightness**










Menu	Description
 <b>Brightness</b>	When OSD is not on the screen, push the button to adjust brightness.

 SOURCE



Menu	Description
<b>SOURCE</b>	Selects the video signal while the OSD is off.

[User Control Buttons](#) | 
 [Direct Functions](#) | 
 [OSD Functions](#) | 
  MagicTune™ | 
  MagicRotation

 <b>Picture</b>	Brightness	Contrast			
 <b>Color</b>	Color Tone	Color Control	Gamma		
 <b>Image</b>	Coarse	Fine	Sharpness	H-Position	V-Position
 <b>OSD</b>	Language	H-Position	V-Position	Transparency	Display Time
 <b>Setup</b>	Auto Source	Image Reset	Color Reset		
 <b>Information</b>					

 **Picture** 






Menu	Description	Play/Stop
<b>Brightness</b>	You can use the on-screen menus to change the brightness according to personal preference. <b>Direct Access Feature</b> : When OSD is not on the screen, push the button to adjust brightness.	
<b>Contrast</b>	You can use the on-screen menus to change the contrast according to personal preference.	



Color








Menu	Description	Play/Stop
------	-------------	-----------

<b>Color Tone</b>	The tone of the color can be changed and one of four modes can be selected - Cool, Normal, Warm and Custom.	
<b>Color Control</b>	Adjusts individual R,G,B color balance.	
<b>Gamma</b>	Select one of three pre-defined gammas. <ul style="list-style-type: none"> <li>• Mode 1 : Shows normal gamma</li> <li>• Mode 2 : Shows lower gamma (darker)</li> <li>• Mode 3 : Shows higher gamma (brighter)</li> </ul>	



 Image 




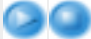



Menu	Description	Play/Stop
<b>Coarse</b>	Removes noise such as vertical stripes. Coarse adjustment may move the screen image area. You may relocate it to the center using the horizontal control menu. (Available in analog mode only)	
<b>Fine</b>	Removes noise such as horizontal stripes. If the noise persists even after fine tuning, repeat it after adjusting the frequency (clock speed). (Available in analog mode only)	
<b>Sharpness</b>	Changes the clearance of image.	
<b>H-Position</b>	Changes the horizontal position of the monitor's entire display. (Available in analog mode only)	
<b>V-Position</b>	Changes the vertical position of the monitor's entire display. (Available in analog mode only)	



OSD 



Menu	Description	Play/Stop
<b>Language</b>	<p>You can choose one of eight languages.</p> <ul style="list-style-type: none"> <li>English, Deutsch, Español, Français, Italiano, Svenska, Русский, Português</li> </ul> <p><b>Note:</b>The language chosen affects only the language of the OSD. It has no effect on any software running on the computer.</p>	
<b>H-Position</b>	You can change the horizontal position where the OSD menu appears on your monitor.	
<b>V-Position</b>	You can change the vertical position where the OSD menu appears on your monitor.	
<b>Transparency</b>	Change the transparency of the background of the OSD.	
<b>Display Time</b>	The menu will be automatically turned if no adjustments are made for a certain time period. You can set the amount of time the menu will wait before it is turned off.	



Setup 



Menu	Description	Play/Stop
<b>Auto Source</b>	Select <b>Auto Source</b> for the monitor to automatically select the signal source.	
<b>Image Reset</b>	Image parameters are replaced with the factory default values.	
<b>Color Reset</b>	Color parameters are replaced with the factory default values.	



Information



Menu	Description
------	-------------

**Information**

Shows a video source, display mode on the OSD screen.

# MagicTune™ HELP

[Overview](#) | [Installation](#) | [OSD Mode](#) | [Color Calibration](#) | [Uninstall](#) | [Troubleshooting](#)

## Overview

### What is MagicTune™?

Monitor performance can vary due to the graphics card, host computer lighting conditions and other environmental factors. In order to get the best image on a monitor requires you to adjust it for your unique setting. Unfortunately, the manual controls available to tune the image often prove to be challenging. Proper adjustment (tuning) requires an easy to use program that goes through a step-by-step process to obtain the best overall picture quality.

In most cases even simple adjustments to Brightness, or Contrast require navigation of the multi-level, on-screen display (OSD) menus that are not easy to understand. Furthermore, there is no feedback to assist in correctly setting the controls of the monitor. MagicTune is a software utility that guides you through the tuning process with easy to understand instructions and back ground patterns designed for each monitor control. The display settings for each user can be saved, providing an easy way to select display characteristics in a multi-user environment, or having a single user have multiple defined presets based on content and ambient lighting.



### Basic Functionality

MagicTune is a software utility that allows monitor adjustment and color tuning using the [Display Data Channel Command Interface \(DDC/CI\)](#) protocol. All adjustments to the display are controlled via software to eliminate the need to use the monitor on-screen display (OSD). MagicTune supports Windows 98SE, Me, 2000, XP Home, and XP Professional.

MagicTune allows for quick accurate tuning of the display with the ability to easily save and use monitor configurations that are best suited for you.



### OSD Mode

The OSD mode allows easy adjustment of monitor settings without taking pre-defined steps. You can access the desired menu item to set with ease.

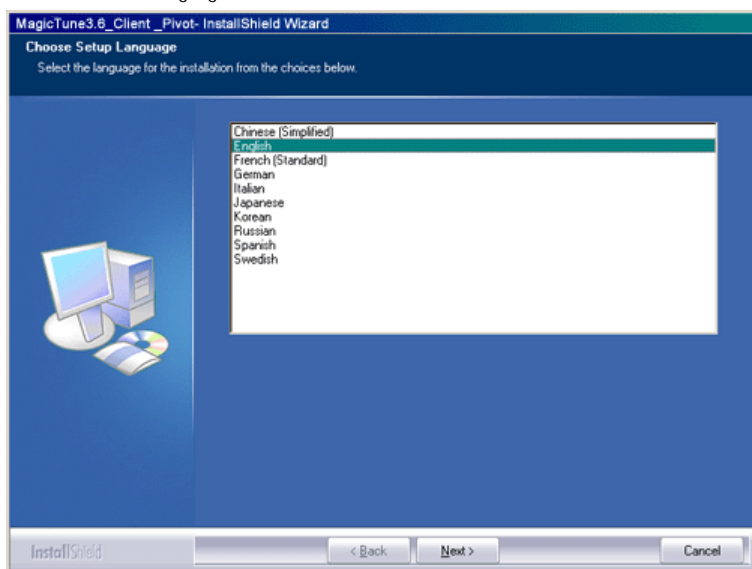
Specifications subject to change without notice.  
MagicTune is a trademark of SAMSUNG ELECTRONICS CO., Inc. Windows is a registered trademark of Microsoft Corp.  
Other trademarks are property of their respective holders.

# MagicTune™ HELP

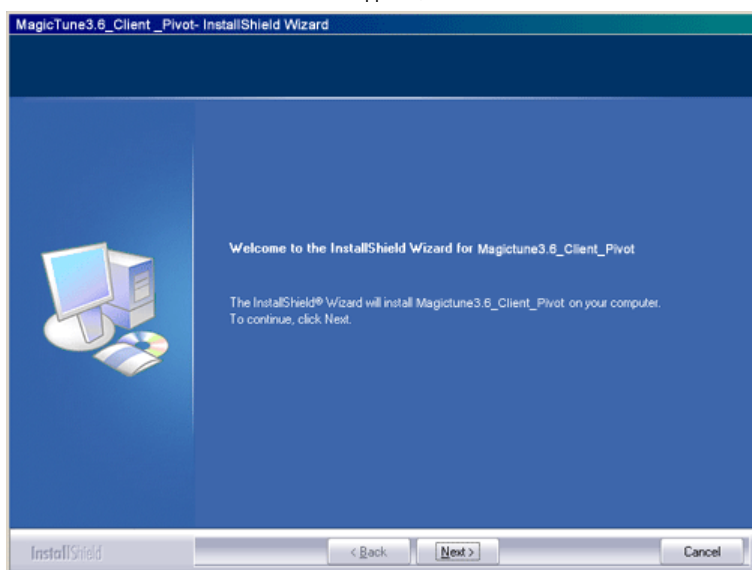
Overview | **Installation** | OSD Mode | Color Calibration | Uninstall | Troubleshooting

## Installation

1. Insert the installation CD into the CD-ROM drive.
2. Click the MagicTune™ installation file.
3. Select installation Language, Click "Next".

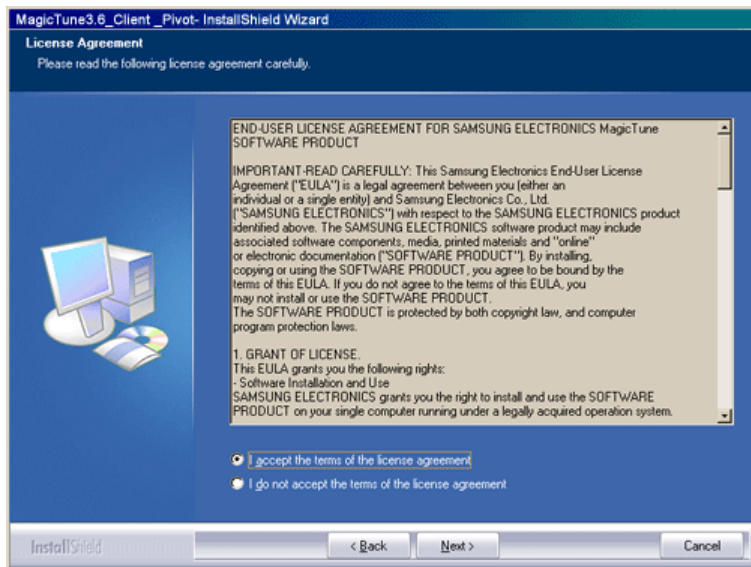


4. When the InstallationShield Wizard window appears, click "Next."

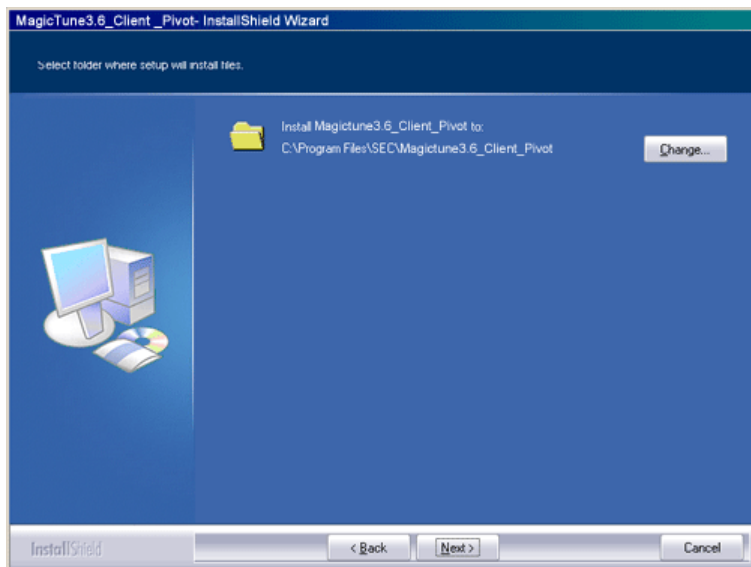


5. Select "I agree to the terms of the license agreement" to accept the terms of use.

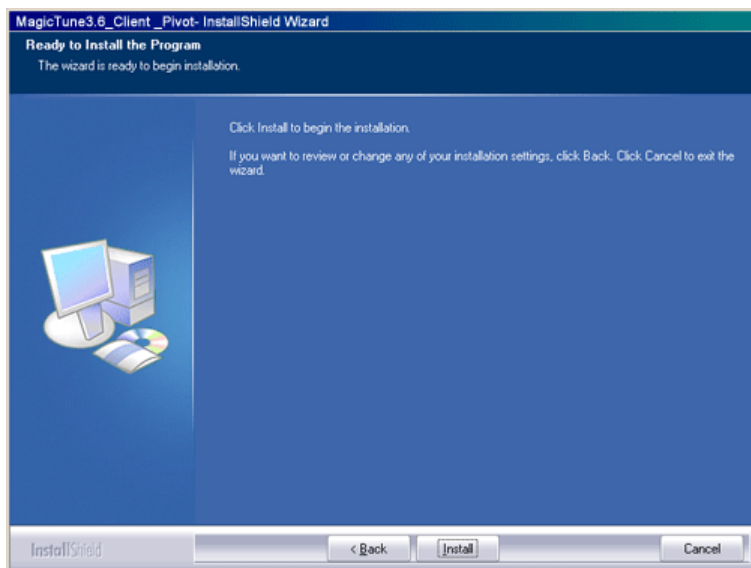




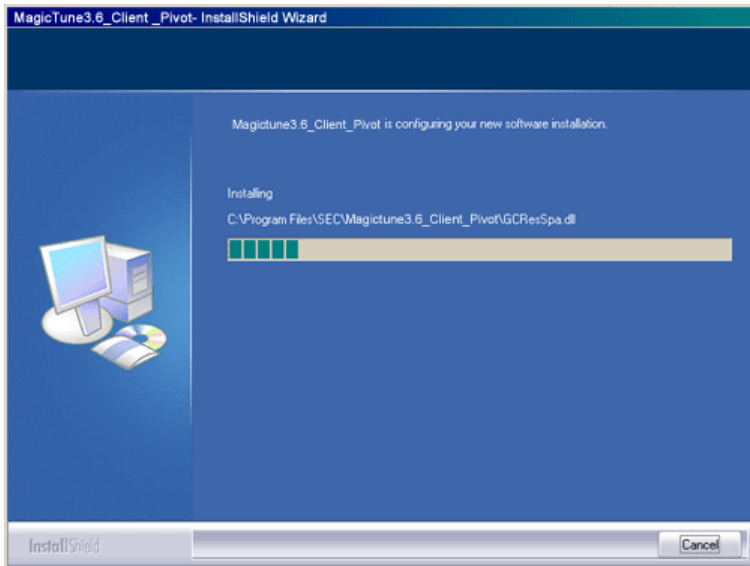
6. Choose a folder to install the MagicTune program.



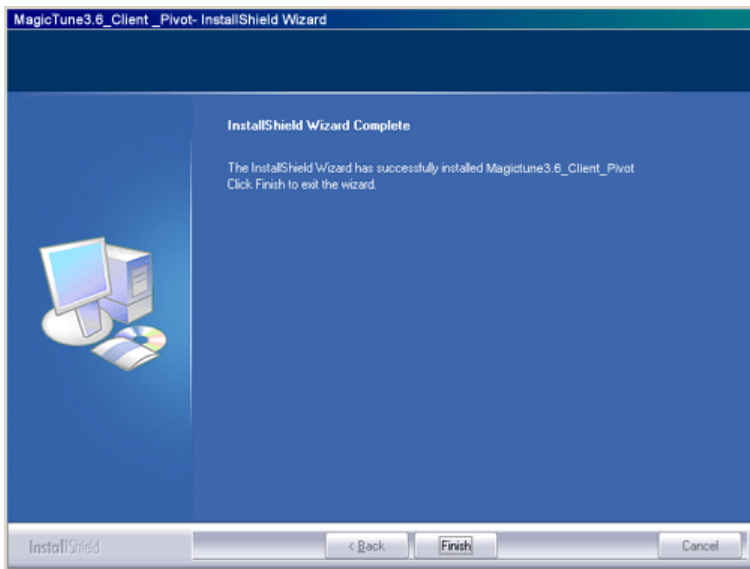
7. Click "Install."



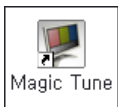
8. The "Installation Status" window appears.



9. Click "Finish."



10. When the installation is complete, the MagicTune executable icon appears on your desktop.



Double-click the icon to start the program.



Magictune execution icon may not appear depending on specification of computer system or monitor. If that happens, press F5 Key.



## ? Installation Problems

The installation of MagicTune™ can be affected by such factors as the video card, motherboard and the network environment.

See "[Troubleshooting](#)" if you have trouble during installation.

## i System Requirements

## OS

- Windows 98 SE
- Windows Me
- Windows 2000
- Windows XP Home Edition
- Windows XP Professional

## Hardware

- 32MB Memory above
- 25MB Hard disk space above

\* For more information, visit the MagicTune [website](#).

Specifications subject to change without notice.  
MagicTune is a trademark of SAMSUNG ELECTRONICS CO., Inc. Windows is a registered trademark of Microsoft Corp.  
Other trademarks are property of their respective holders.

# MagicTune™ HELP

Overview | Installation | **OSD Mode** | Color Calibration | Uninstall | Troubleshooting

MagicTune allows for quick accurate tuning of the display with the ability to easily save and use monitor configurations that are best suited for you.



- **OSD mode may appear inconsistent with the explanation in guidance book depending on specification of each monitor.**
- **When Pivot is functioning, part of MagicTune Program may not operate normally.**
- **Magic Pivot : Magic pivot will automatically pivots the monitor to 0, 90, 180degrees when you pivots the monitor.**

**To execute Magic Pivot, it should be done as below.**

- Please install both of Pivot program and Magic tune 3.6 in your PC.
- Launch Magic tune 3.6
- **Option** → **Preference** → click the small box as "V" in **enable task tray menu.**

- **MagicTune control mode will be different according to monitor models.**

## OSD Mode



The OSD mode makes the adjustment of settings on all monitors easy. When selected, each tab on top of the control window displays the general descriptions of the sub-menu items for adjustment.

When selected, each tab displays a list of menus. For quick adjustment of the monitor settings, the OSD mode allows easy and convenient access to all tabs and sub-menu items.

### Button Tab Definition

<b>OK</b>	Applies any changes made and exits MagicTune.
<b>Reset</b>	Restores the display settings to the factory settings.
<b>Cancel</b>	Exits MagicTune without applying the changes made. If you have not made any changes

in the control window, clicking "Cancel" does not cause any actions.



## Picture Tab Definition

Allows the user to adjust the screen settings to the desired values.



Brightness  Contrast  Resolution  MagicBright



**Brightness** Makes the entire screen brighter or darker. The detailed data of the images in the dark areas can be lost if the brightness is not adjusted to the proper level. Adjust the brightness for best viewing conditions.

**Contrast** Adjusts the difference in brightness between the bright and dark areas on screen. Determines the crispness of the images.

**Resolution** Lists all display resolutions supported by the program.

MagicBright™ is a new feature providing the optimum viewing environment depending on the contents of the image you are watching. Currently four different modes are available: Text, Internet, Game, Sport, Movie and Custom. Each mode has its own pre-configured brightness value. You can easily select one of six settings by simply pressing MagicBright control buttons.

**MagicBright™**

1. Text: For documentations or works involving heavy text.
2. Internet: For working with a mixture of images such as text and graphics.
3. Game : For watching motion pictures such as a Game.
4. Sport : For watching motion pictures such as a Sport.
5. Movie: For watching motion pictures such as a DVD or Video CD.
6. Custom: Although the values are carefully chosen by our engineers, the pre-configured values may not be comfortable to your eyes depending on your taste. If this is the case, adjust the Brightness and Contrast by using the OSD menu.



MagicBright control mode will be different according to monitor models.  
Some monitor will only support Four modes(Text, Internet, Entertain, Custom)



## Color Tab Definition

Adjusts the "warmth" of the monitor background or image color.



MagicColor and Gamma will be shown only in the monitor that supports these functions.



Color Tone  Color Control  Calibration  MagicColor  Gamma



The tone of the color can be changed.

- Warm2 - Warm1 - Cool 1 - Cool 2 - Cool 3 - Cool 4 - Cool 5 - Cool 6 - Cool 7
- Off

### Color Tone



Color Tone mode will be different according to monitor models.  
Some monitor will only support Four modes( Warm, Normal, Cool, Custom)

### Color Control

Adjusts of the monitor image color.  
You can change the monitor color to your desired color.

- R - G - B

### Calibration

The process through which the colors of your choice are optimized and maintained. You will find MagicTune extremely useful if you are one of those who wish to view images with their full details accurately reproduced - including web images and ones produced by a digital camera or scanner.

MagicColor is a new technology that Samsung has exclusively developed to improve digital image and to display natural color more clearly without disturbing image quality.

1. OFF : Returns to the original mode.
2. DEMO : The screen before applying MagicColor appears on the right and the screen after applying MagicColor appears on the left.
3. Full : Displays not only vivid natural color but also more realistic natural skin color with clearness.
4. Intelligent : Displays vivid natural color with clearness.
5. MagicZone

- The MagicZone ensures the clear and sharp display of animated multimedia or photo images by enhancing the brightness, sharpness, saturation, Hue of a certain area on the screen. This offers an easy-to-use interface that highlights the video-playing portion of your multimedia program by automatically detecting and highlight the desired area by dragging.
- When the mouse cursor is activated (🖱️) and it is necessary to de-activate it to use it for other tasks, right click your mouse, or put the activated cursor (🖱️) on the taskbar and click. When de-activated, the icon on the screen changes back to the one shown before activation.
- Especially, MagicZone is appropriate to using the moving picture.
- **Auto Detect** : If you run the Movie in some players, MagicZone will automatically get the play screen highlighted (it will be supported in players of Gom, Adrenalin, KCP, Window Media, and Power DVD etc., )Some other players also can be highlighted but could have some problems.
- Task menu



**MagicColor**

<b>HUE</b>	Adjust the tint of the color.
<b>Saturation</b>	Adjusts the color saturation.
<b>Brightness</b>	Adjusts the Brightness.
<b>Sharpness</b>	Adjusts the difference between the lightest and darkest areas of the display.
<b>Zone Off</b>	Turn off the zone that you have captured.
<b>Reset</b>	Returns to the the default setting that vendor has set.

- Depending on the monitor models **Color Control, Sharpness, Contrast, Color Tone** will not be adjustable in MagicColor mode of **Full and Intelligent**.



- MagicTune will be disappear if you excute MagicZone, and closing the MagicZone after adjusting, will show the MagicTune again. (System Tray is Unchecked)  
MagicTune will be disappear if you excute MagicZone, and closing the MagicZone after adjusting. will not show MagicTune again. (System Tray is Checked)
- MagicColor mode will be different according to monitor models.  
MagicZone mode will show if the monitor supports the function.

Adjusts the gamma value.

**Gamma**



Gamma mode will be different according to monitor models. Some monitor will only support Three modes( Mode1, Mode2, Mode3)

- Mode 1 : Shows normal gamma
- Mode 2 : Shows higher gamma(brighter)
- Mode 3 : Shows lower gamma(darker)

## Image Tab Definition

Adjusts the Fine , Coarse and Position values.



Image Setup  Position  Sharpness



### Image Setup

- Fine : Removes noise such as horizontal stripes.  
If the noise persists even after Fine tuning, repeat it after adjusting the frequency (clock speed).
- Coarse : Removes noise such as vertical stripes.  
Coarse adjustment may move the screen image area.  
You may relocate it to the center using the Horizontal Control menu.
- Auto Setup : Auto adjustment allows the monitor to self-adjust to the incoming video signal. The values of fine, coarse and position are adjusted automatically.

### Position

Adjusts the screen location horizontally and vertically.

### Sharpness

Changes the clearance of image.

## Option Tab Definition

You can configure MagicTune using the following options.





Loads the Preferences Dialog Box. Preferences in use will have an "V" in the check box. To turn on or off any Preference, position the cursor over the box and click.

**Preferences**

- Enable task tray menu .  
- To access the MagicTune menus, click the icon on the [task tray menu].  
The menus are not displayed if the [Enable System Tray] is deselected in [Options] \* [Basic Settings].
- Select Language - The language chosen affects only the language of the OSD.

**Source Select**

- Analog
- Digital



**Support Tab Definition**

Shows the Asset ID and the version number of the program, and allows you to use the Help feature.



**Help**

Visit the MagicTune website or click to open the Help files (User Manual) if you need any help installing or running MagicTune. The User Manual opens within a basic browser window.

**Asset ID**

you can use the server to control the Client monitor.  
(Server program should be installed to use this program as Client)

**User Name** Shows the user name that is registered in PC.

---

**User ID** Shows the user ID that is register in PC.

---

**Server IP** Write down the server IP .

---

**Department** Write down the department.

---

**Location** Write down the location.

---

**Version** Displays the version of MagicTune.

---

Specifications subject to change without notice.  
MagicTune is a trademark of SAMSUNG ELECTRONICS CO., Inc. Windows is a registered trademark of Microsoft Corp.  
Other trademarks are property of their respective holders.

## Color Calibration

### 1. Color Calibration



Color Calibration guides you to get optimal color condition for your monitor.

Proceed following 5 steps for getting optimal monitor color condition .

1. Control "Brightness control bar" for matching the brightness of control patch and the brightness of background pattern
2. When you detect specific color tone on "Control patch", move the control cursor toward to the direction of the color tone referring to "Color reference Circle".  
=> Adjustment is finished properly, you won't detect any color tone on Control patch.
3. When you finish adjustment for step1, Click "Next" button .
4. Repeat 1), 2), 3) procedures for remaining step2 ~ step5.
5. You can easily view the calibration effect through clicking "Preview " button!

#### How multiple users can use adjusted color values

##### Definition

When monitor is used by multiple users, color values which are adjusted via Color calibration for each users can be saved and used. Up to 5 users can use the saved color values.

1. How to save adjusted color values:  
Press Next to make it change into Apply and then you can save adjusted color values.  
As many as 5 values can be saved.
2. How to apply the saved color values:  
Press Multi User button on main screen to select and use one of the saved color values.



### 2. Preview



Press "Preview" button on the Color Calibration.  
The above picture will be shown.

1. Press "View Calibrated" button to see the calibration effect which you adjusted.
2. Press "View Uncalibrated" button to see the original image.

Specifications subject to change without notice.  
MagicTune is a trademark of SAMSUNG ELECTRONICS CO., Inc. Windows is a registered trademark of Microsoft Corp.  
Other trademarks are property of their respective holders.

# MagicTune™ HELP

Overview | Installation | OSD Mode | [Color Calibration](#) | **Uninstall** | Troubleshooting

## Uninstall

The MagicTune program can be removed only by using the "Add or Remove Programs" option of the Windows Control Panel.

Perform the following steps remove MagicTune.

1. Go to [Task Tray] ' [Start] ' [Settings] and select [Control Panel] in the menu. If the program runs on Windows XP, go to [Control Panel] in the [Start] menu.
2. Click the "Add or Remove Programs" icon in Control Panel.
3. In the "Add or Remove Programs" screen, scroll down to find "MagicTune." Click on it to highlight it.
4. Click the "Change/Remove" button to remove the program.
5. Click "Yes" to begin the uninstall process.
6. Wait until the "Uninstall Complete" dialog box appears.

Visit the MagicTune [website](#) for technical support for MagicTune, FAQs (questions and answers) and software upgrades.

Specifications subject to change without notice.  
MagicTune is a trademark of SAMSUNG ELECTRONICS CO., Inc. Windows is a registered trademark of Microsoft Corp.  
Other trademarks are property of their respective holders.

## ■ ■ ■ ■ Troubleshooting

- MagicTune may not work in case monitor is replaced or driver of graphic card is updated while MagicTune is operating. If so, please restart the system.

Symptom	Check List	Solutions
Check when MagicTune does not function properly.	MagicTune feature is found only on PC (VGA) with Window OS that supports Plug and Play.	<p>* To check whether your PC is available for MagicTune feature, follow the steps below (When Windows is XP);</p> <p>Control Panel -&gt; Performance and Maintenance -&gt; System -&gt; Hardware -&gt; Device Manager -&gt; Monitors -&gt; After deleting Plug and Play monitor, find 'Plug and Play monitor' by searching new Hardware.</p> <p>MagicTune is an additional software for the monitor. Some graphic cards may not support your monitor. When you have a problem with the graphic card, visit our website to check the compatible graphic card list provided. <a href="http://www.samsung.com/monitor/magictune">http://www.samsung.com/monitor/magictune</a></p>
MagicTune™ doesn't work properly.	Have you changed your PC or video graphic card?	Download the latest program. The program can be downloaded <a href="http://www.samsung.com/monitor/magictune">http://www.samsung.com/monitor/magictune</a> .

- Visit our website and download the installation software for MagicTune MAC.
- Visit the MagicTune [website](#) for technical support for MagicTune, FAQs (questions and answers) and software upgrades.

Specifications subject to change without notice.  
MagicTune is a trademark of SAMSUNG ELECTRONICS CO., Inc. Windows is a registered trademark of Microsoft Corp.  
Other trademarks are property of their respective holders.

## Overview

### ● What is MagicRotation?



Traditionally, computer displays allowed the user to view only in landscape mode. In today's information age, more users need to view documents, web pages, emails, etc. in their day to day life. These types of applications can be better viewed in portrait mode where the entire contents are available on the screen. This greatly improves the user's productivity allowing him the flexibility to switch between landscape and portrait modes.

The MagicRotation Software from Samsung Electronics, Inc. provides the user with a rotation feature (0, 90, 180, 270 orientation) that facilitates the optimum utilization of computer display screen, better viewing and improved user productivity.



### ● Basic Function

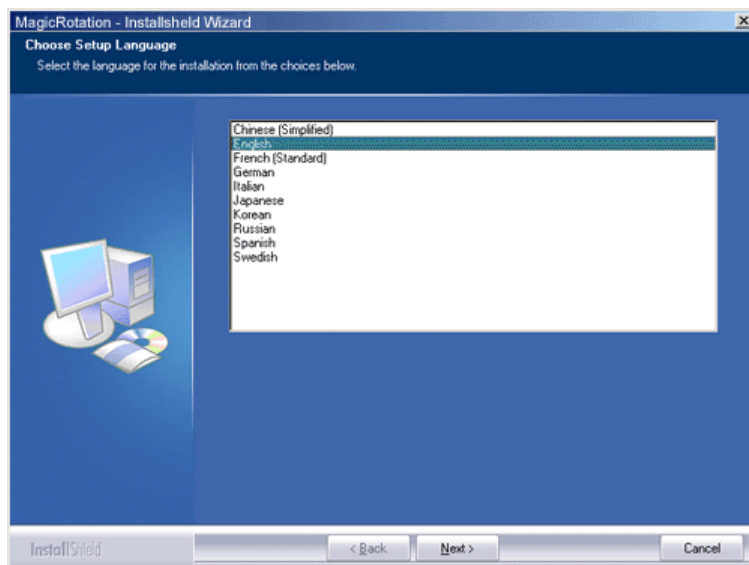
MagicRotation will support Windows™ 98 SE, Me, 2000, XP Home, NT 4.0 and XP Professional.

\* Windows™ is registered trademark of Microsoft Corporation, Inc.

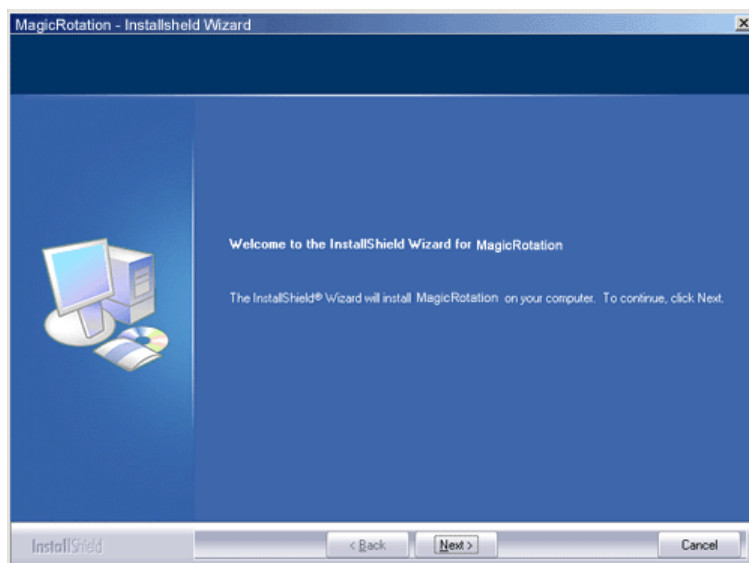
The specifications are subject to change without notice.  
MagicRotation is a trademark of SAMSUNG ELECTRONICS CO., LTD.  
All other product trademarks mentioned in this document may be registered trademarks of their respective companies.

## Installation

1. Insert the installation CD into the CD-ROM drive.
2. Click the MagicRotation installation file.
3. Select installation Language, Click "Next".

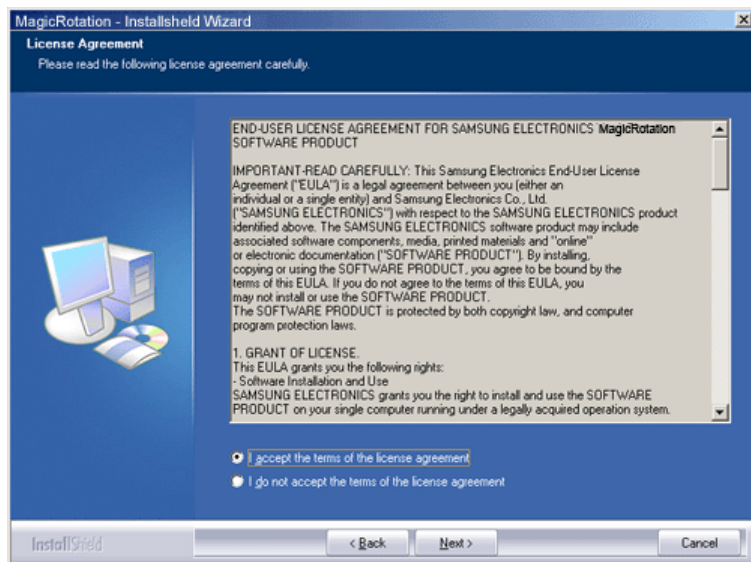


4. When the InstallationShield Wizard window appears, click "Next."

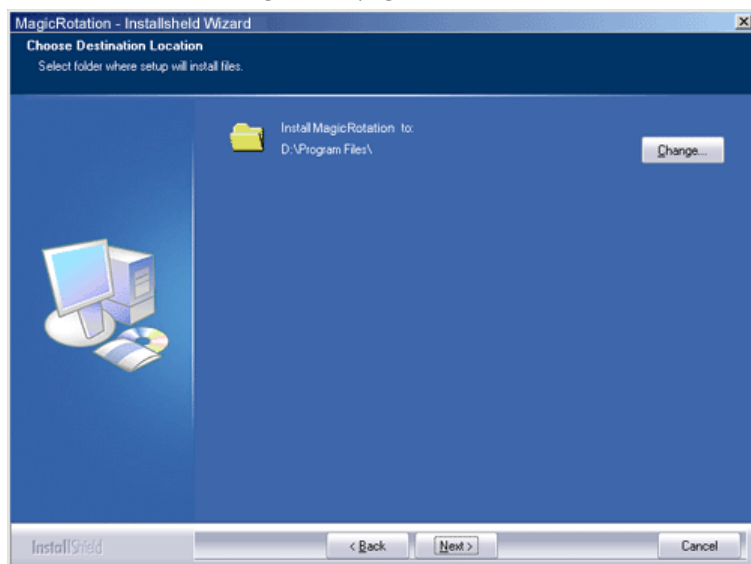


5. Select "I agree to the terms of the license agreement" to accept the terms of use.

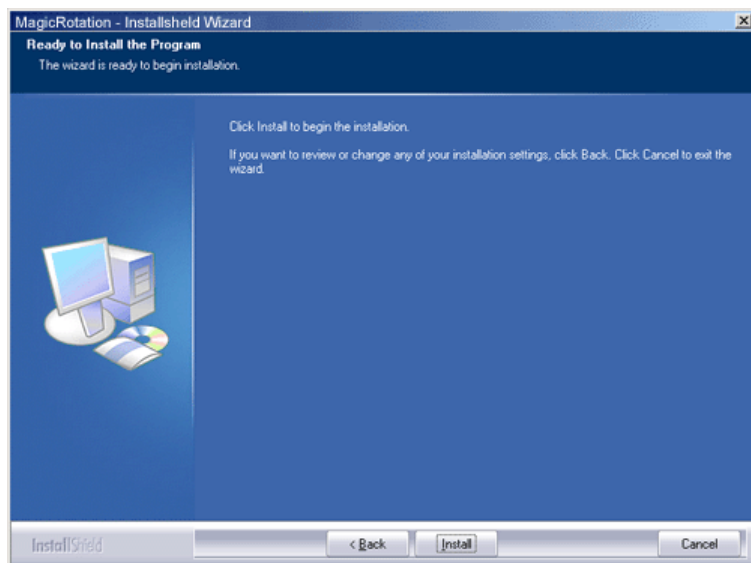




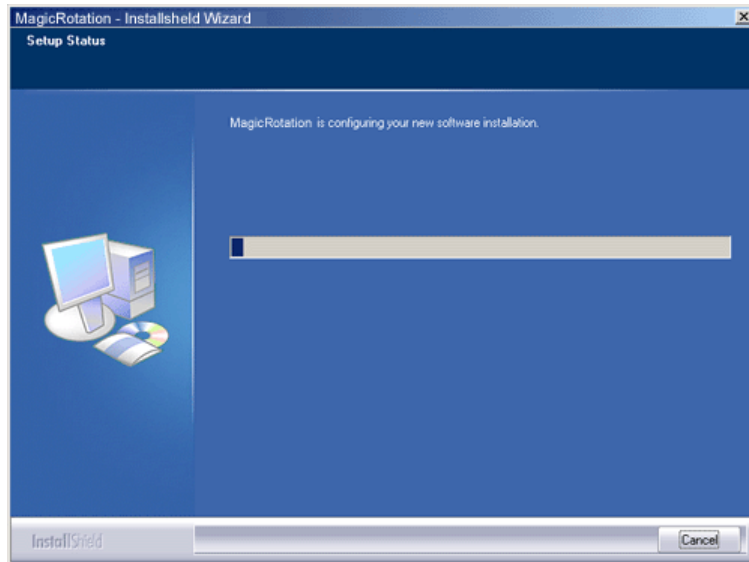
6. Choose a folder to install the MagicRotation program.



7. Click "Install."

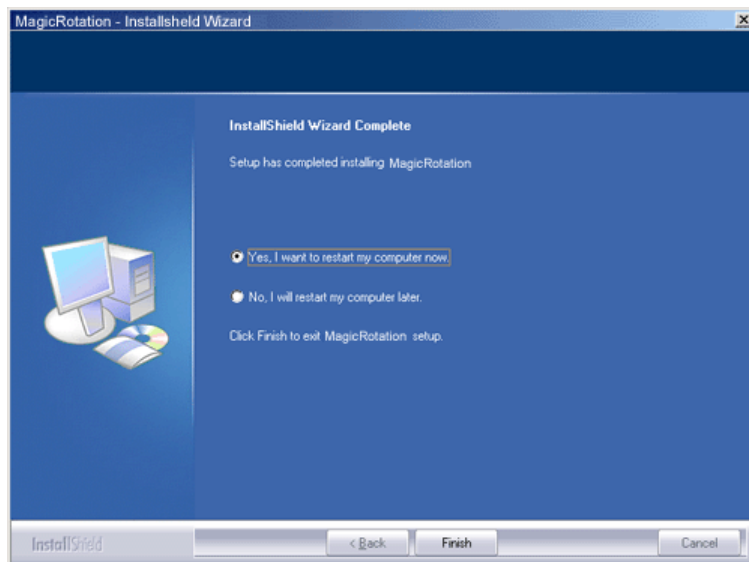


8. The "Installation Status" window appears.



9. Click "Finish."

Have to reboot the system in order for the MagicRotation to work properly.



10. When the installation is complete, the MagicRotation executable icon appears on your desktop.



## Installation Problems

The installation of MagicRotation can be affected by the factors such as video card, motherboard and the network environment.

See "[Troubleshooting](#)" if you have trouble during installation.

### ● Limitation

1. The "Display Driver" should be properly loaded for the MagicRotation to work properly. The installed "Display Driver" should be the latest driver supplied by the vendor.
2. If some applications like Windows Media Player, Real Player, etc. are not displaying movie files properly in 90, 180 and 270 orientations then do the following :

- Close the application.
- Select the Orientation (90, 180, 270) you want to view the application.
- Relaunch the application.

In most cases this should fix the problem.

3. User Applications using OpenGL and DirectDraw (3D drawing) will not function as per the orientation mode selected (90, 180, 270).  
e.g. 3D games
4. DOS based applications in Full Screen Mode will not function as per the orientation mode selected (90, 180, 270).
5. Dual is not supported in Windows™ 98, ME, NT 4.0.
6. MagicRotation does not provide support for 24 bits per pixel (Bit depth/Color Quality).
7. If you are changing your Graphic Card it is recommended that you uninstall the MagicRotation Software before doing so.

## ● System Requirements

### OS

- Windows™ 98 SE
- Windows™ Me
- Windows™ NT 4.0
- Windows™ 2000
- Windows™ XP Home Edition
- Windows™ XP Professional

### Hardware

- 128MB Memory above(recommended)
- 25MB Free Hard disk space above

### Service Packs

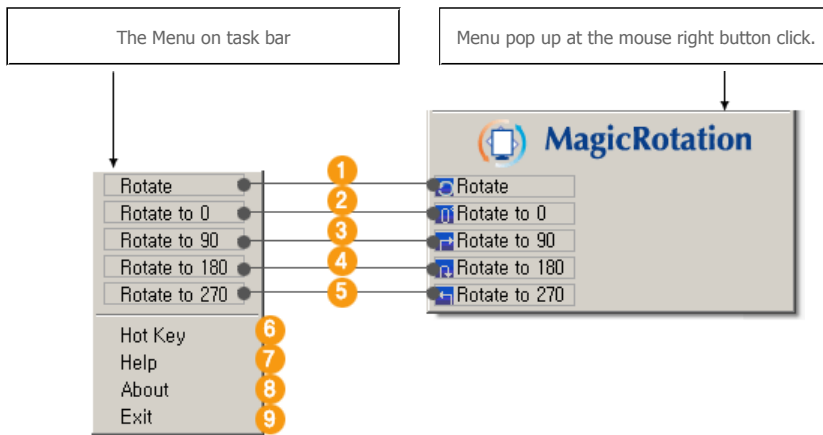
- It is recommended that your System has the latest Service Pack installed.
- For Windows™ NT 4.0, it is recommended to install Internet Explorer 5.0 and above with Active Desktop component.

\* For more information, visit the MagicRotation [website](#).

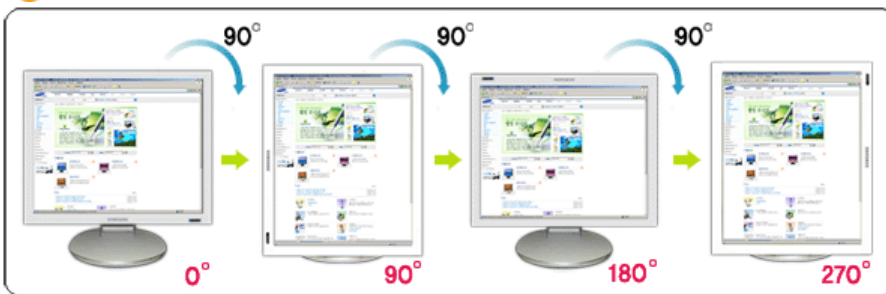
\* Windows™ is registered trademark of Microsoft Corporation, Inc.

The specifications are subject to change without notice.  
MagicRotation is a trademark of SAMSUNG ELECTRONICS CO., LTD.  
All other product trademarks mentioned in this document may be registered trademarks of their respective companies.

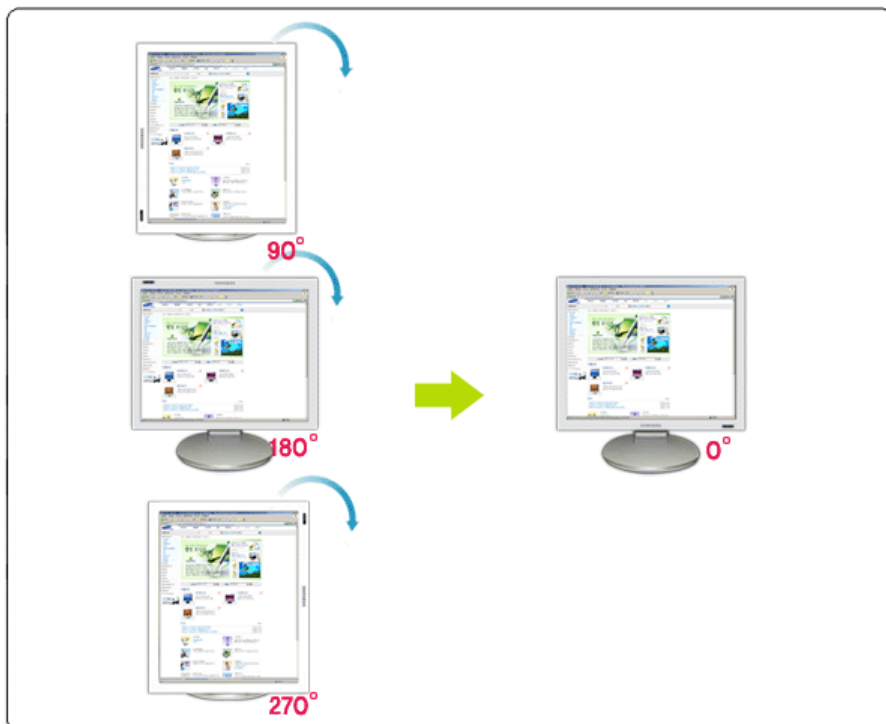
## Interface



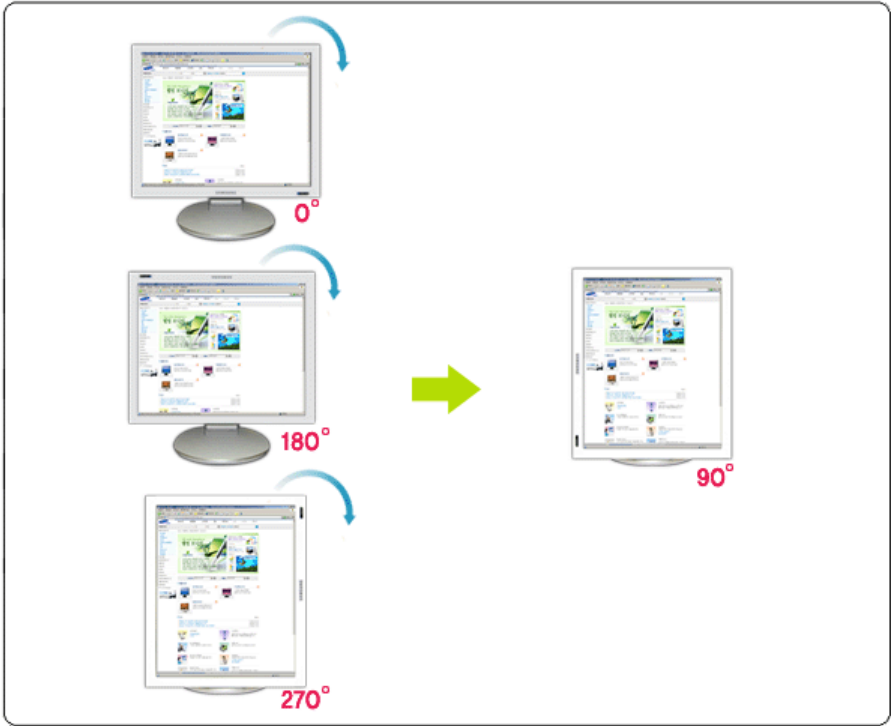
**1 Rotate** : Display will get rotated by the unit of 90 degree



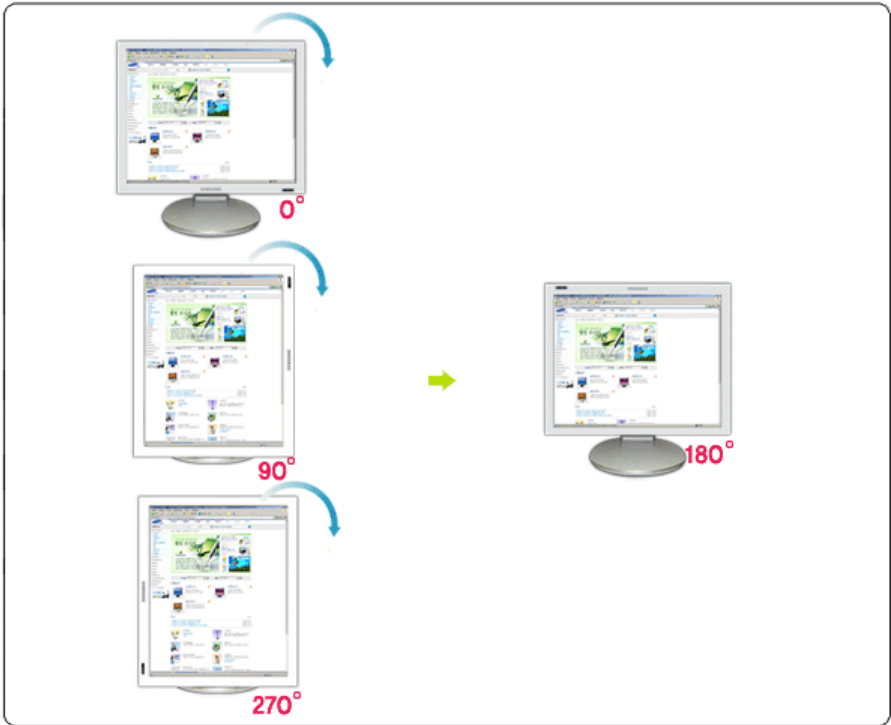
**2 Rotate to 0** : Display will get rotated to 0 degree from the current angle of rotation.



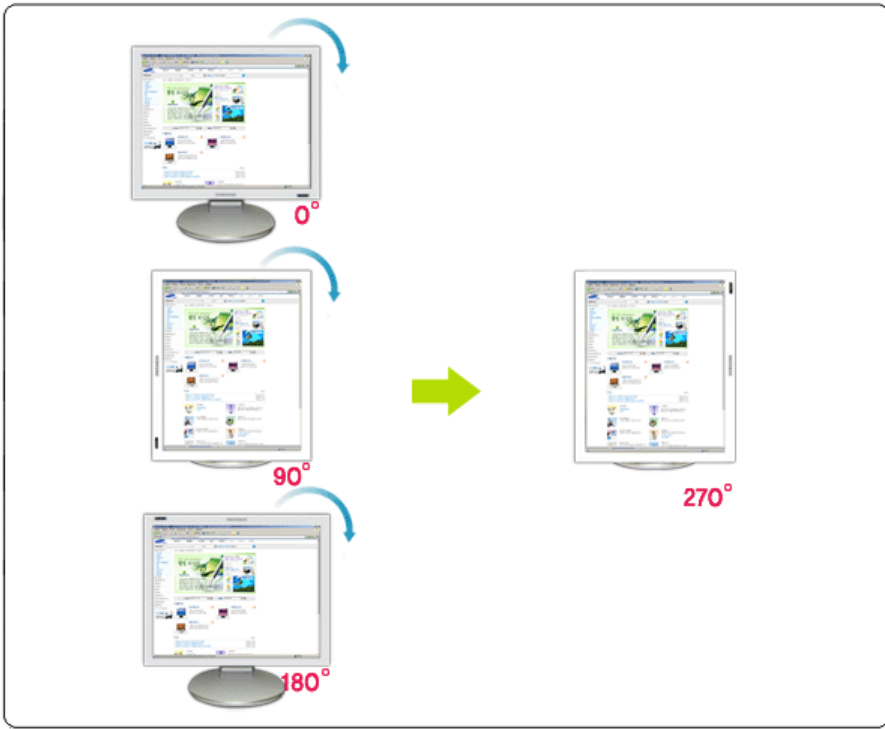
**3 Rotate to 90** : Display will get rotated to 90 degree from the current angle of rotation.



4 Rotate to 180 : Display will get rotated to 180 degree from the current angle of rotation.



5 Rotate to 270 : Display will get rotated to 270 degree from the current angle of rotation.



- 6 **Hot key** : Hot Keys are available by default and can be changed by user.  
It can be designated by user directly with keyboard after changing the existing HotKey instead .  
User can create the hot key with the combination of Shift, Ctrl, Alt and general keys. In case only general key is pressed, it will be designated in the form of Alt+general key.
- 7 **Help** : It shows the HELP of MagicRotation program.
- 8 **About** : It shows the version and copyright of program.
- 9 **Exit** : It exits from MagicRotation program.

The specifications are subject to change without notice.  
MagicRotation is a trademark of SAMSUNG ELECTRONICS CO., LTD.  
All other product trademarks mentioned in this document may be registered trademarks of their respective companies.

## Uninstall

The MagicRotation program can be removed only by using the "Add/Remove Programs" option of the Windows Control Panel.

Perform the following steps to remove MagicRotation.

1. Go to [Task Tray] ' [Start] ' [Settings] and select [Control Panel] in the menu.  
If the program runs on Windows™ XP, go to [Control Panel] in the [Start] menu.
2. Click the "Add/Remove Programs" icon in Control Panel.
3. In the "Add/Remove Programs" screen, scroll down to find "MagicRotation"  
Click on it to highlight it.
4. Click the "Change/Remove" button to remove the program.
5. Click "Yes" to begin the uninstall process.
6. Wait until the "Uninstall Complete" dialog box appears.
7. After unistall restart the system to complete the uninstallation.

Visit the MagicRotation [website](#) for technical support for MagicRotation, FAQs (questions and answers) and software upgrades.

\* Windows™ is registered trademark of Microsoft Corporation, Inc.

The specifications are subject to change without notice.  
MagicRotation is a trademark of SAMSUNG ELECTRONICS CO., LTD.  
All other product trademarks mentioned in this document may be registered trademarks of their respective companies.

## Troubleshooting

### ● Before You Call Technical Support

- MagicRotation Software works with the installed "Display Driver" supplied by your Graphic Card Vendor to provide screen rotation capabilities. If the installed "Display Driver" is working incorrectly or has bugs in it, then these bugs would still exist even after MagicRotation Software is installed. Any incorrect/random behaviour resulting due to problems in the installed "Display Driver" are not due MagicRotation Software.

In order to verify if a problem exists in the installed "Display Driver" , you can perform the following diagnostic steps :

1. Check if the problem is occurring in both 0 orientation (Landscape mode) and 90 orientation (Portrait mode).
2. Check if the problem occurs with different color depths (8/16/32 bits per pixel) and different resolution modes (800 x 600, 1024 x 768).
3. Check if the problem occurs without installing MagicRotation Software.

If the problem is repeating in any/all of the following scenarios then it may be the problem with your installed "Display Driver" :

In order to correct the problem you need to perform the following steps :

1. Uninstall MagicRotation Software.
2. Obtain the latest "Display Driver" from your Graphic Card Vendor.  
The latest "Display Driver" from (ATI, NVIDIA, MATROX, INTEL, etc.) are easily available for download from their respective websites.
3. Install the latest "Display Driver"
4. Install MagicRotation Software. In most of the cases this should correct the problem.

- 
- MagicRotation may not work in case monitor is replaced or driver of graphic card is updated while MagicRotation is operating.  
If so, please restart the system.

- 
- Visit the MagicRotation [website](#) for technical support for MagicRotation, FAQs (questions and answers) and software upgrades.

The specifications are subject to change without notice.  
MagicRotation is a trademark of SAMSUNG ELECTRONICS CO., LTD.  
All other product trademarks mentioned in this document may be registered trademarks of their respective companies.





Check List | Q & A | Self-Test Feature Check



Before calling for service, check the information in this section to see if you can remedy any problems yourself. If you do need assistance, please call [the phone number on the Information section](#) or [contact your dealer](#).

Symptom	Check List	Solutions
No images on the screen. I cannot turn on the monitor.	Is the power cord connected properly?	Check the power cord connection and supply.
	Can you see " <b>Check Signal Cable</b> " on the screen?	<p><b>(When connecting D-Sub cable)</b> Check the signal cable connection.</p> <p><b>(When connecting DVI cable)</b> If you still see an error message on the screen when the monitor is connected properly, check to see if the monitor status is set to analog. Press Source button to have the monitor double-check the input signal source.</p>
	If the power is on, reboot the computer to see the initial screen (the login screen), which can be seen.	<p>If the initial screen (the login screen) appears, boot the computer in the applicable mode (the safe mode for Windows ME/XP/2000) and then change the frequency of the video card. (Refer to the <a href="#">Preset Timing Modes</a>)</p> <p>Note: If the initial screen (the login screen) does not appear, <a href="#">contact a service center or your dealer</a>.</p>
Can you see " <b>Not Optimum Mode</b> ", " <b>Recommended mode : 1600 X 1200 60Hz</b> " on the screen?	<p>You can see this message when the signal from the video card exceeds the maximum resolution and frequency that the monitor can properly handle.</p> <p>Adjust the maximum resolution and frequency that the monitor can handle properly.</p> <p>If the display exceeds SXGA or 75Hz, a "<b>Not Optimum Mode</b>", "<b>Recommended mode : 1600 X 1200 60Hz</b>" message is displayed. If the display exceeds 85Hz, the</p>	

		<p>display will work properly but the <b>"Not Optimum Mode", "Recommended mode : 1600 X 1200 60Hz"</b> message appears for one minute and then disappears. Please change to the recommended mode during this one-minute period.</p> <p>(The message is displayed again if the system is rebooted.)</p>
	<p>There is no image on the screen. Is the power indicator on the monitor blinking at 1 second intervals?</p>	<p>The monitor is in PowerSaver mode.</p> <p>Press any key on the keyboard to activate the monitor and restore the image on the screen.</p> <p>If there is still no image, press the <b>'SOURCE'</b> button. Then press any key on the keyboard again to activate the monitor and restore the image on the screen.</p>
	<p>Is the monitor connected using the DVI cable?</p>	<p>You may get a blank screen if you boot the system before you connect the DVI cable, or disconnect and then reconnect the DVI cable while the system is running as certain types of graphic cards do not send out video signals. Connect the DVI cable and then reboot the system.</p>
<p>I cannot see the On Screen Display.</p>	<p>Have you locked the On Screen Display (OSD) Menu to prevent changes?</p>	<p>Unlock the OSD by pressing the MENU button for at least 5 seconds.</p>
<p>The screen shows strange colors or just black and white.</p>	<p>Is the screen displaying only one color as if looking at the screen through a cellophane paper?</p>	<p>Check the signal cable connection. Make sure the video card is fully inserted in it's slot.</p>
	<p>Have the screen colors become strange after running a program or due to a crash between applications?</p>	<p>Reboot the computer.</p>
	<p>Has the video card been set properly?</p>	<p>Set the video card by referring to the video card manual.</p>
<p>The screen suddenly has become unbalanced.</p>	<p>Have you changed the video card or the driver?</p>	<p>Adjust screen image position and size using the OSD.</p>
	<p>Have you adjusted the resolution or frequency on the monitor?</p>	<p>Adjust the resolution and frequency of the video card. (Refer to the <a href="#">Preset Timing Modes</a>).</p>
	<p>The screen can be unbalanced due to the cycle of the video card signals. Readjust Position by referring to the OSD.</p>	
<p>The screen is out of focus or OSD cannot be adjusted.</p>	<p>Have you adjusted the resolution or frequency on the monitor?</p>	<p>Adjust the resolution and frequency of the video card. (Refer to the <a href="#">Preset Timing Modes</a>).</p>
<p>LED is blinking but no images on the screen.</p>	<p>Is the frequency properly adjusted when checking the Display Timing on the menu?</p>	<p>Adjust the frequency properly by referring to the video card manual and the <a href="#">Preset Timing Modes</a>.</p> <p>(The maximum frequency per resolution may differ from product to product.)</p>

		product.)
There are only 16 colors shown on the screen. The screen colors have changed after changing the video card.	Have the Windows colors been set properly?	Windows ME/2000/XP: Set the colors properly at the <b>Control Panel Display Settings</b> .
	Has the video card been set properly?	Set the video card by referring to the video card manual.
There is a message that reads "Unrecognized monitor, Plug & Play (VESA DDC) monitor found".	Have you installed the monitor driver?	Install the monitor driver according to the <a href="#">Driver Installation Instructions</a> .
	See the video card manual to see if the Plug & Play (VESA DDC) function can be supported.	Install the monitor driver according to the <a href="#">Driver Installation Instructions</a> .
Check when MagicTune does not function properly.	MagicTune feature is found only on PC (VGA) with Window OS that supports Plug and Play.	* To check whether your PC is available for MagicTune feature, follow the steps below (When Windows is XP);  Control Panel -> Performance and Maintenance -> System -> Hardware -> Device Manager -> Monitors -> After deleting Plug and Play monitor, find 'Plug and Play monitor' by searching new Hardware.
		MagicTune is an additional software for the monitor. Some graphic cards may not support your monitor. When you have a problem with the graphic card, visit our website to check the compatible graphic card list provided. <a href="http://www.samsung.com/monitor/magictune">http://www.samsung.com/monitor/magictune</a>
MagicTune™ doesn't work properly.	Have you changed your PC or video graphic card?	Download the latest program. The program can be downloaded <a href="http://www.samsung.com/monitor/magictune">http://www.samsung.com/monitor/magictune</a> .



Visit our website and download the installation software for MagicTune MAC.



Check the following items if there is trouble with the monitor.

1. Check if the power cord and the video cables are properly connected to the computer.
2. Check if the computer beeps more than 3 times when booting.  
(If it does, request an after-service for the main board of the computer.)
3. If you installed a new video card or if you assembled the PC, check if the installed the adapter (video) driver and the monitor driver.
4. Check if the scanning ratio of the video screen is set at 56Hz ~ 75Hz.  
(Do not exceed 75Hz when using the maximum resolution.)
5. If you have problems in installing the adapter (video) driver, boot the computer in Safe Mode, remove the Display Adapter at the "**Control Panel System Device Administrator**" and then reboot the computer to reinstall the adapter (video) driver.



If problems repeatedly occur, [contact an authorized service center](#).



Question	Answer
How can I change the frequency?	Frequency can be changed by reconfiguring the video card.  Note that video card support can vary, depending on the version of the driver used. (Refer to the computer or the video card manual for details.)
How can I adjust the resolution?	Windows ME/XP/2000 : Set the resolution at the Control Panel Display Settings.  * Contact the video card manufacturer for details.
How can I set the Power Saving function?	Windows ME/XP/2000 : Set the function at BIOS-SETUP of the computer or the screen saver. (Refer to Windows/Computer Manual).
How can I clean the outer case/LCD Panel?	Disconnect the power cord and then clean the monitor with a soft cloth, using either a cleaning solution or plain water.  Do not leave any remains of the detergent nor scratch the case. Do not allow any water to go inside the monitor.

[Check List](#)

[Q & A](#)

[Self-Test Feature Check](#)

### Self-Test Feature Check

[Self-Test Feature Check](#) | [Warning Messages](#) | [Environment](#) | [Useful Tips](#)

**Your monitor provides a self test feature that allows you to check whether your monitor is functioning properly.**

#### Self-Test Feature Check

1. Turn off both your computer and the monitor.
2. Unplug the video cable from the back of the computer.
3. Turn on the monitor.  
If the monitor is functioning properly, you will see a box in the illustration below.

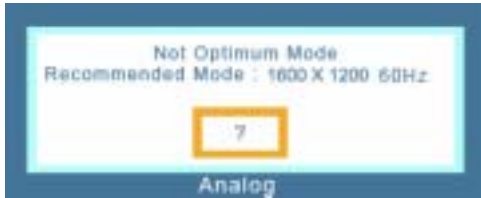


This box appears during normal operation if the video cable becomes disconnected or damaged.

4. Turn off your monitor and reconnect the video cable; then turn on both your computer and the monitor.  
If your monitor screen remains blank after using the previous procedure, check your video controller and computer system; your monitor is functioning properly.

#### Warning Messages

If there is something wrong with the input signal, a message appears on the screen or the screen goes blank although the power indicator LED is still on. The message may indicate that the monitor is out of scan range or that you need to check the signal cable.



---

## • Environment

**The location and the position of the monitor may influence the quality and other features of the monitor.**

1. if there are any sub woofer speakers near the monitor, unplug and relocate the woofer to another room.
2. Remove all electronic devices such as radios, fans, clocks and telephones that are within 3 feet (one meter) of the monitor.

---

## • Useful Tips

- A monitor recreates visual signals received from the computer. Therefore, if there is trouble with the computer or the video card, this can cause the monitor to become blank, have poor coloring, noise, video mode not supported, etc. In this case, first check the source of the problem, and then contact the Service Center or your dealer.
- **Judging the monitor's working condition**  
If there is no image on the screen or a "**Not Optimum Mode**", "**Recommended Mode : 1600 X 1200 60Hz**" message comes up, disconnect the cable from the computer while the monitor is still powered on.
  - If there is a message coming up on the screen or if the screen goes white, this means the monitor is in working condition.
  - In this case, check the computer for trouble.



General | PowerSaver | Preset Timing Modes |

● General

**General**

Model Name SyncMaster 204T

**LCD Panel**

Size 20.1" Diagonal  
Display area 432mm (H) x 324mm (V)  
Pixel Pitch 0.255mm (H) x 0.255mm (V)  
Type a-si TFT/SPVA

**Synchronization**

Horizontal 30 ~ 81 kHz  
Vertical 56 ~ 75 Hz

**Display Color**

16.7M Colors

**Resolution**

Optimum resolution 1600 x 1200@ 60Hz  
Maximum resolution 1600 x 1200@ 60Hz

**Input Signal, Terminated**

RGB Analog, DVI(Digital Visual Interface) Compliant Digital RGB  
0.7Vp-p ± 5% positive bright 75 ohms ± 10 % (terminated)

**Maximum Pixel Clock**

162 MHz (Analog/Digital)

**Power Supply**

AC 100 ~ 240 VAC(±10%), 60/50 Hz ± 3Hz

**Signal Cable**

15pin-to-15pin D-sub cable, detachable, 1.8m  
DVI-D to DVI-D connector, detachable, 2.0m

**Power Consumption**

Less than 50W(Analog/Digital)

## Dimensions (WxDxH)/ Weight

445 X 457.2 X 228.5 mm / 17.5 X 18 X 9.0 inch (With Stand) / 8.15kg

## VESA Mounting Interface

100mm x 100mm (for use with Specialty(Arm) Mounting hardware.)

## Environmental considerations

Operating Temperature: 50°F ~ 104°F (10°C ~ 40°C)  
Humidity: 10% ~ 80%, non-condensing

Storage Temperature: -4°F ~ 113 °F (-20°C ~ 45°C)  
Humidity: 5% ~ 95%, non-condensing

## Plug and Play Capability

This monitor can be installed on any Plug & Play compatible system. Interaction of the monitor and computer systems will provide the best operating conditions and monitor settings. In most cases, monitor installation will proceed automatically, unless the user wishes to select alternate settings.

**Note: Design and specifications are subject to change without prior notice.**

General | **PowerSaver** | Preset Timing Modes

### PowerSaver

This monitor has a built-in power management system called PowerSaver. This system saves energy by switching your monitor into a low-power mode when it has not been used for a certain amount of time. The monitor automatically returns to normal operation when you press a key on the keyboard. For energy conservation, turn your monitor OFF when it is not needed, or when leaving it unattended for long periods. The PowerSaver system operates with a VESA DPMS compliant video card installed in your computer. Use a software utility installed on your computer to set up this feature.

State	Normal Operation	Power saving mode EPA/ENERGY 2000	Power Switch off
Power Indicator	Green	Green, Blinking	Black
Power Consumption	Analog/Digital Less than 50W	Analog/Digital Less than 2W (Off-mode)	Less than 0W (120Vac/220 Vac)



This monitor is EPA ENERGY STAR® compliant and ENERGY2000 compliant when used with a computer equipped with VESA DPMS functionality.

As an ENERGY STAR® Partner, SAMSUNG has determined that this product meets the ENERGY STAR® guidelines for energy efficiency.

General | PowerSaver | **Preset Timing Modes**

### Preset Timing Modes

If the signal transferred from the computer is the same as the following Preset Timing Modes, the screen will be adjusted automatically. However, if the signal differs, the screen may go blank while the power LED is on. Refer to the video card manual and adjust the screen as follows.

**Table 1. Preset Timing Modes**

Horizontal	Vertical
------------	----------

Display Mode	Frequency (kHz)	Frequency (Hz)	Pixel Clock (MHz)	Sync Polarity (H/V)
VESA,1600X1200	75.000	60.000	162.000	+/+
IBM,640X350	31.469	70.086	25.175	+/-
IBM,720X400	31.469	70.087	28.322	-/+
IBM,720X400	31.469	59.940	25.175	-/-
VESA,640X480	37.861	72.809	31.500	-/-
VESA,640X480	37.500	75.000	31.500	-/-
MAC,640X480	35.000	66.667	30.240	-/-
MAC,832X624	49.726	74.551	57.284	-/-
VESA,800X600	35.156	56.250	36.000	+/-,+/-
VESA,800X600	37.879	60.317	40.000	+/+
VESA,800X600	48.077	72.188	50.000	+/+
VESA,800X600	46.875	75.000	49.500	+/+
VESA,1024X768	48.363	60.004	65.000	-/-
VESA,1024X768	56.476	70.069	75.000	-/-
VESA,1024X768	60.023	75.029	78.250	+/+
VESA,1152X864	67.500	75.000	108.00	+/+
MAC,1152X870	68.681	75.062	100.00	-/-
VESA,1280X960	60.000	60.000	108.00	+/+
VESA,1280X1024	79.976	75.025	135.00	+/+

#### Horizontal Frequency

The time to scan one line connecting the right edge to the left edge of the screen horizontally is called Horizontal Cycle and the inverse number of the Horizontal Cycle is called Horizontal Frequency. Unit: kHz



#### Vertical Frequency

Like a fluorescent lamp, the screen has to repeat the same image many times per second to display an image to the user. The frequency of this repetition is called Vertical Frequency or Refresh Rate. Unit: Hz





[Service](#) | [Terms](#) | [For Better Display](#) | [Authority](#) | [Image Retention Free](#) | [Correct Disposal](#) |

● **Service**

The address and phone number of the company can be changed without prior notice.

- **AUSTRALIA :**  
Samsung Electronics Australia Pty Ltd.  
Customer Response Centre  
7 Parkview Drive, Homebush Bay NSW 2127  
Tel : 1300 362 603  
<http://www.samsung.com.au/>
  
- **BRAZIL :**  
Samsung Eletronica da Amazonia Ltda.  
R. Prof. Manoelito de Ornellas, 303, Terro B  
Chacara Sto. Antonio, CEP : 04719-040  
Sao Paulo, SP  
SAC : 0800 124 421  
<http://www.samsung.com.br/>
  
- **CANADA :**  
Samsung Electronics Canada Inc.  
Samsung Customer Care  
7037 Financial Drive  
Mississauga, Ontario  
L5N 6R3  
1-800-SAMSUNG (1-800-726-7864)  
<http://www.samsung.ca/>
  
- **CHILE :**  
SONDA S.A.  
Teatinos 550, Santiago Centro, Santiago, Chile  
Fono: 56-2-5605000 Fax: 56-2-5605353  
56-2-800200211  
<http://www.sonda.com/>  
<http://www.samsung.cl/>
  
- **COLOMBIA :**  
Samsung Electronics Colombia  
Cra 9 No 99A-02 Of. 106  
Bogota, Colombia  
Tel.: 9-800-112-112  
Fax: (571) 618 - 2068  
<http://www.samsung-latin.com/>  
e-mail : [soporte@samsung-latin.com](mailto:soporte@samsung-latin.com)

- **ESPAÑA :**  
Samsung Electronics Comercial Iberica, S.A.  
Ciencias, 55-65 (Poligono Pedrosa) 08908  
Hospitalet de Llobregat (Barcelona)  
Tel. : (93) 261 67 00  
Fax. : (93) 261 67 50  
<http://samsung.es/>
  
- **FRANCE :**  
SAMSUNG ELECTRONICS FRANCE Service  
Paris Nord 2  
66 rue des Vanesses  
BP 50116 Villepinte  
95950 Roissy CDG Cedex  
Tel : 08 25 08 65 65  
Fax : 01 48 63 06 38  
<http://www.samsungservices.com/>
  
- **GERMANY :**  
TELEPLAN Rhein-Main GmbH  
Feldstr. 16  
64331 Weiterstadt  
T. 06151/957-1306  
F. 06151/957-1732  
\* EURO 0.12/Min  
<http://www.samsung.de/>
  
- **HUNGARY :**  
Samsung Electronics Magyar Rt.  
1039, Budapest, Lehel u. 15-17.  
Tel: 36 1 453 1100  
Fax: 36 1 453 1101  
<http://www.samsung.hu/>
  
- **ITALY :**  
Samsung Electronics Italia S.p.a.  
Via C. Donat Cattin, 5  
20063 Cernusco s/Naviglio (MI)  
Servizio Clienti: 199.153.153  
<http://www.samsung-italia.com/>
  
- **MÉXICO :**  
SAMSUNG ELECTRONICS MÉXICO. S.A. de C.V.  
Vía Lopez Portillo No. 6, Col. San Fco. Chilpan  
Tultitlán, Estado de México, C.P. 54940  
Tel: 01-55-5747-5100 / 01-800-726-7864  
Fax: 01-55-5747-5202 / 01-800-849-1743  
RFC: SEM950215S98  
<http://www.samsung.com.mx/>

IMPORTADO POR: SAMSUNG ELECTRONICS MÉXICO. S.A. de C.V.  
Vía Lopez Portillo No. 6, Col. San Fco. Chilpan  
Tultitlán, Estado de México, C.P. 54940  
Tel: 01-55-5747-5100 / 01-800-726-7864

EXPORTADO POR: Samsung Electronics CO.,LTD.  
416, Mae tan-3dong, Yeongtong - gu,  
Suwon City, Gyeonggi-do Korea

- **NETHERLANDS/BELGIUM/LUXEMBOURG :**  
Samsung Electronics Benelux B. V.  
Fleminglaan 12 2289 CP Rijiswijk, NEDERLANDS  
Service and informatielijn ;  
Belgium :0800-95214, <http://www.samsung.be/>  
Netherlands : 0800-2295214, <http://www.samsung.nl/>

- **PANAMA :**  
Samsung Electronics Latinoamerica( Z.L.) S.A.  
Calle 50 Edificio Plaza Credicorp, Planta Baja  
Panama  
Tel. : (507) 210-1122, 210-1133  
Tel : 800-3278(FAST)  
<http://www.samsung-latin.com/>
  
- **PERU :**  
Servicio Integral Samsung  
Av.Argentina 1790 Lima1. Peru  
Tel: 51-1-336-8686  
Fax: 51-1-336-8551  
<http://www.samsungperu.com/>
  
- **PORTUGAL :**  
SAMSUNG ELECTRONICA PORTUGUESA S.A.  
Rua Mário Dioniso, N<sup>o</sup>2 - 1<sup>o</sup> Drt. 2795-140 LINDA-A-VELHA  
Tel. 214 148 114/100 Fax. 214 148 133/128  
Free Line 800 220 120  
<http://www.samsung.pt/>
  
- **SOUTH AFRICA :**  
Samsung Electronics,5 Libertas Road, Somerset Office Park,  
Bryanston Ext 16. Po Box 70006, Bryanston,2021, South Africa  
Tel : 0027-11-549-1621  
Fax : 0027-11-549-1629  
<http://www.samsung.co.za/>
  
- **SWEDEN/DENMARK/NORWAY/FINLAND :**  
Samsung Electronics AB  
Box 713  
S-194 27 UPPLANDS VÄSBY  
SVERIGE  
Besöksadress : Johanneslundsvägen 4  
Samsung support Sverige: 020-46 46 46  
Samsung support Danmark : 8088-4646  
Samsung support Norge: 8001-1800  
Samsung support Finland: 0800-118001  
Tel +46 8 590 966 00  
Fax +46 8 590 966 50  
<http://www.samsung.se/>
  
- **THAILAND :**  
HAI SAMSUNG SERVICE CENTER  
MPA COMPLEX BUILDING,1st-2nd Floor  
175 SOI SUEKSA VIDHAYA SATHON SOI 12  
SILOM ROAD ,SILOM,BANGRAK  
BANGKOK 10500  
TEL : 0-2635-2567  
FAX : 0-2635-2556
  
- **UKRAINE :**  
SAMSUNG ELECTRONICS REPRESENTATIVE OFFICE IN UKRAINE  
4 Glybochitska str.  
Kiev, Ukraine  
Tel. 8-044-4906878  
Fax 8-044-4906887  
Toll-free 8-800-502-0000  
<http://www.samsung.com.ua/>
  
- **United Kingdom :**  
Samsung Electronics (UK) Ltd.  
Samsung House, 225 Hook Rise South

Surbiton, Surrey KT6 7LD  
Tel. : (0208) 391 0168  
Fax. : (0208) 397 9949  
< European Service Center & National Service >  
Stafford Park 12 Telford, Shropshire, TF3 3BJ  
Tel. : (0870) 242 0303  
Fax. : (01952) 292 033  
<http://samsungservice.co.uk/>

• **U.S.A :**

Samsung Electronics America  
Service Division  
400 Valley Road, Suite 201  
Mount Arlington, NJ 07856  
1-800-SAMSUNG (1-800-726-7864)  
<http://www.samsung.com/monitor/>

---

[Service](#) | [Terms](#) | [For Better Display](#) | [Authority](#) | [Image Retention Free](#) | [Correct Disposal](#) |

• **Terms**

• **Dot Pitch**

The image on a monitor is composed of red, green and blue dots. The closer the dots, the higher the resolution. The distance between two dots of the same color is called the 'Dot Pitch'. Unit: mm

• **Vertical Frequency**

The screen must be redrawn several times per second in order to create and display an image for the user. The frequency of this repetition per second is called Vertical Frequency or Refresh Rate. Unit: Hz

Example: If the same light repeats itself 60 times per second, this is regarded as 60 Hz.

• **Horizontal Frequency**

The time to scan one line connecting the right edge to the left edge of the screen horizontally is called Horizontal Cycle. The inverse number of the Horizontal Cycle is called Horizontal Frequency. Unit: kHz

• **Interlace and Non-Interlace Methods**

Showing the horizontal lines of the screen from the top to the bottom in order is called the Non-Interlace method while showing odd lines and then even lines in turn is called the Interlace method. The Non-Interlace method is used for the majority of monitors to ensure a clear image. The Interlace method is the same as that used in TVs.

• **Plug & Play**

This is a function that provides the best quality screen for the user by allowing the computer and the monitor to exchange information automatically. This monitor follows the international standard VESA DDC for the Plug & Play function.

• **Resolution**

The number of horizontal and vertical dots used to compose the screen image is called 'resolution'. This number shows the accuracy of the display. High resolution is good for performing multiple tasks as more image information can be shown on the screen.

Example: If the resolution is 1600 X 1200 , this means the screen is composed of 1600 horizontal dots (horizontal resolution) and 1200 vertical lines (vertical resolution).

---

[Service](#) | [Terms](#) | [For Better Display](#) | [Authority](#) | [Image Retention Free](#) | [Correct Disposal](#) |

• **For Better Display**

1. Adjust computer resolution and screen injection rate (refresh rate) on computer as described below to enjoy the best quality of picture. You can have an uneven quality of picture in the screen if the best quality of picture is not provided in TFT-LCD.
  - o Resolution: 1600 X 1200
  - o Vertical frequency (refresh rate): 60 Hz
2. When you clean the monitor and the panel outside, please apply the recommended small amount of cleaner by using soft and dry cloth and polish it. Let LCD area not to be forced but to be scrubbed out softly.  
If excessive force is applied, you can have a stain on it.
3. If you are not satisfied with the quality of picture, you can get better quality of picture by executing "auto adjustment function" in display screen that is appeared as window termination button is pressed.  
If there's still noise after automatic adjustment, use FINE/COARSE adjustment function.
4. If you view a fixed screen for an extended period of time, residual image or blurriness may appear.  
Change the mode to energy save or set a screensaver to moving picture when you need to be away from the monitor for an extended period of time.

---

[Service](#) | [Terms](#) | [For Better Display](#) | [Authority](#) | [Image Retention Free](#) | [Correct Disposal](#) |



#### Authority

**Information in this document is subject to change without notice.**  
**© 2005 Samsung Electronics Co., Ltd. All rights reserved.**

Reproduction in any manner whatsoever without the written permission of Samsung Electronics Co., Ltd. is strictly forbidden.

Samsung Electronics Co., Ltd. shall not be liable for errors contained herein or for incidental or consequential damages in connection with the furnishing, performance, or use of this material.

*Samsung* is the registered trademark of Samsung Electronics Co., Ltd.; *Microsoft*, *Windows* and *Windows NT* are registered trademarks of Microsoft Corporation; *VESA*, *DPMS* and *DDC* are registered trademarks of Video Electronics Standard Association; the *ENERGY STAR*® name and logo are registered trademarks of the U.S. Environmental Protection Agency (EPA). As an ENERGY STAR® Partner, Samsung Electronics Co., Ltd. has determined that this product meets the ENERGY STAR® guidelines for energy efficiency. All other product names mentioned herein may be the trademarks or registered trademarks of their respective owners.

## PRODUCT INFORMATION (Image Retention Free)

LCD Monitors and TVs may have image retention when switching from one image to another especially after displaying a stationary image for a long time. This guide is to demonstrate correct usage of LCD products in order to protect them from Image retention.

### • What is Image retention ?

During normal operation of a LCD panel, pixel image retention doesn't occur. However, if the same image is displayed for a long time, a slight difference in electric charge accumulates between the two electrodes which encase the liquid crystal. This may cause the liquid crystal to build up in a certain areas of the display. Thus, the previous image is retained when switching to a new video image. All display products, including LCD, are subject to image retention. This is not a product defect.

Please follow the suggestions below to protect your LCD from image retention

### • Power Off, Screen Saver, or Power Save Mode

Ex)

- Turn the power off when using a stationary pattern.
  - Turn the power off for 4 hours after 24 hours in use
  - Turn the power off for 2 hours after 12 hours in use
- Use a Screen saver if possible
  - Screen saver in one color or a moving image is recommended.
- Set the Monitor to power off with the PC Display Properties Power Scheme.

### • Suggestions for specific applications

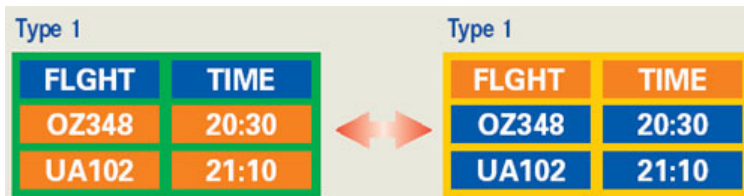
Ex) Airports, Transit Stations, Stock Markets, Banks, and Controlling Systems  
We recommend that you follow set up of your display system program as below:

### • Display Information together with Logo or Moving image cycle.

Ex) Cycle : Display Information for 1 hour followed by a Display Logo or moving image for 1 minute.

### • Change the Color Information periodically (Use 2 different colors).

Ex) Rotate the Color Information with 2 colors every 30 minutes.



Avoid using a combination of characters and background color with large difference in luminance.

Avoid using Grey colors, which can cause Image retention easily.

- Avoid: Colors with big difference in luminance (Black & White, Grey)

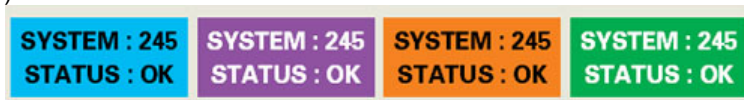
Ex)



- Recommended settings: Bright colors with little difference in luminance

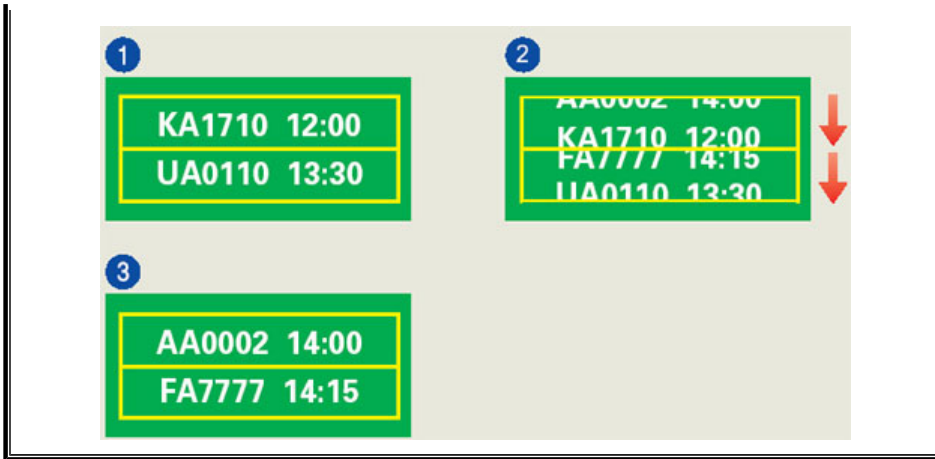
- Change the characters color and background color every 30 minutes

Ex)



- Every 30 minutes, change the characters with movement.

Ex)

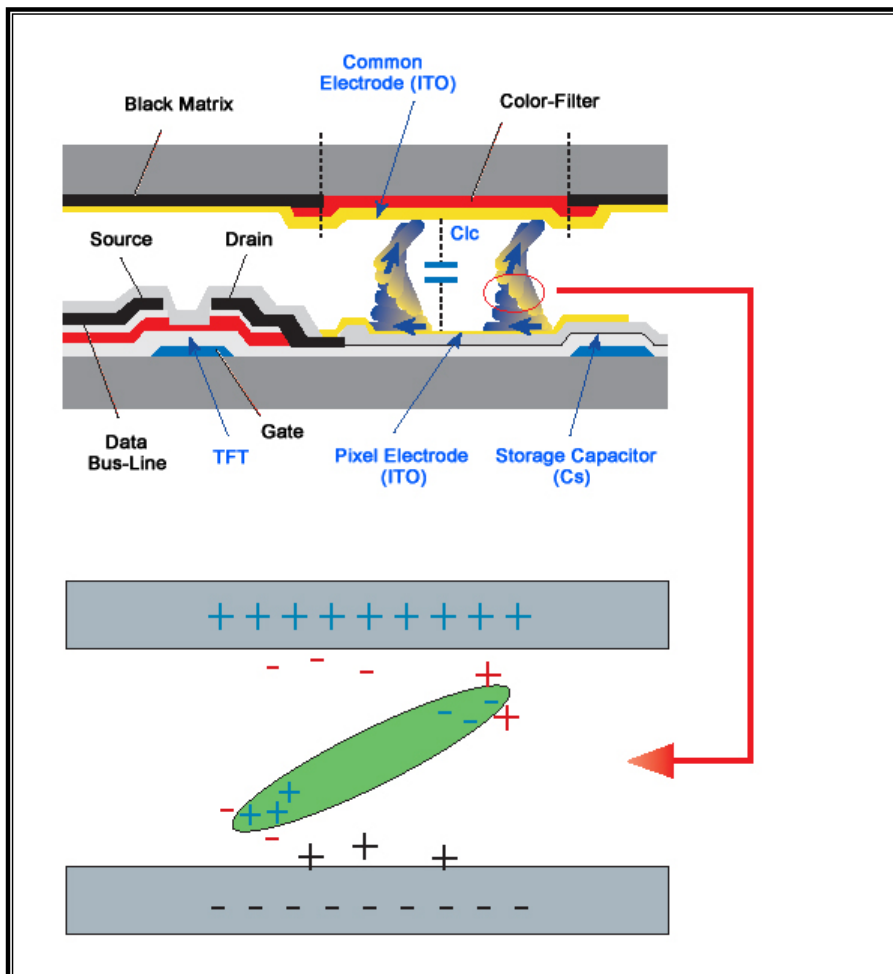


- The best way to protect your monitor from Image retention is to set your PC or System to operate a Screen Saver program when you are not using it.

Image retention may not occur when a LCD panel is operated under normal conditions.

Normal conditions are defined as continuously changing video patterns. When the LCD panel is operated for a long time with a fixed pattern (-over 12 hours-), there may be slight difference in voltage between electrodes that work the liquid crystal (LC) in a pixel. The voltage difference between electrodes increases with time, forcing the liquid crystal to lean. When this occurs, the previous image may be seen when the pattern is changed.

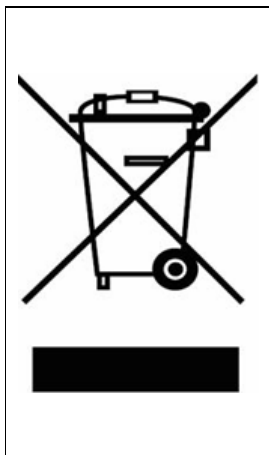
To prevent this, the accumulated voltage difference must be decreased.



- Our LCD Monitor satisfies ISO13406-2 Pixel fault Class II

## Correct Disposal of This Product (Waste Electrical & Electronic Equipment) - Europe only

---



**(Applicable in the European Union and other European countries with separate collection systems)**

This marking shown on the product or its literature, indicates that it should not be disposed with other household wastes at the end of its working life. To prevent possible harm to the environment or human health from uncontrolled waste disposal, please separate this from other types of wastes and recycle it responsibly to promote the sustainable reuse of material resources.

Household users should contact either the retailer where they purchased this product, or their local government office, for details of where and how they can take this item for environmentally safe recycling.

Business users should contact their supplier and check the terms and conditions of the purchase contract. This product should not be mixed with other commercial wastes for disposal.